

## Aqua Dreamer Bracelet and Earring Set

**Project S2014**

*Kat Silvia*

This delicate set features Gita Jewelry settings with Swarovski Crystals in a lovely and light Aqua hue.

### What You'll Need

Gita Jewelry Stone Setting for Swarovski Crystal, Stud Post Earrings for SS29 Chaton, 1 Pair, Rhodium Plated

SKU: FEA-9627

Project uses 1 Pair



Gita Jewelry Almost Done Bracelet, 5 Cup Settings for SS29 Swarovski Crystal Chatons with Rolo Chain, Rhodium Plated

SKU: JB-2614

Project uses 1 piece



Swarovski Crystal, 1088 Xirius Round Stone Chatons ss29, 12 Pieces, Aqua

SKU: SWCH-62922

Project uses 7 pieces

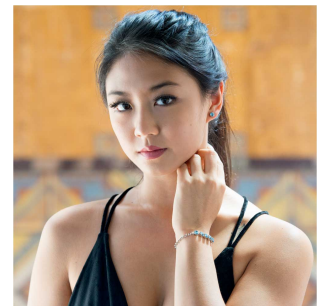


### Recommended Tools:

[XTL-1288] Smart Setter Stone Setting Tool, Works with Gita Jewelry Components, Sets

Swarovski 1088 Size SS29 / 6mm Chatons, [XTL-1292] BeadSmith Prong Pusher Tool,

Square Tip for Gemstones and Crystal Settings, Wooden Handle



### Instructions

1. To make the earrings, please watch our video: How to Use the Beadsmith Prong Pusher with Gita Settings for Swarovski Crystal.

2. To make the bracelet, please watch our video: [How to Use the Smart Setter to Make a Bracelet with Gita Settings for Swarovski Crystals](#).