

The Edwardian Abbey Necklace and Earring Set

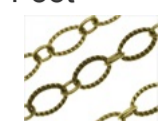
Project S2000 [Skill Level: Beginner]
Designer: Kat Silvia

This necklace and earring set features light and dark purple SWAROVSKI ELEMENTS Pearls as well as brass bead caps and findings to give it that vintage look. I was inspired by the popular television show, "Downton Abbey". The women, and their fashions, exude a sense of mystery, elegance, and class.



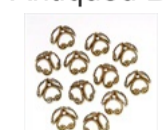
What You'll Need

Antiqued Brass Long Short Etched Textured Oval Chain 6.5mm - Bulk By The Foot



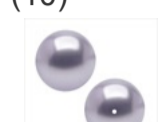
SKU: CHA-9971
Project uses 15 inches

Antiqued Bronze Plated Large Filigree Open Bead Caps 10mm (12)



SKU: BMB-6438
Project uses 20 pieces

SWAROVSKI ELEMENTS Crystal Faux Round Pearls 5810 10mm Lavender (10)



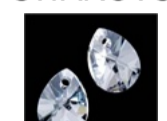
SKU: SWP-1026
Project uses 20 pieces

SWAROVSKI ELEMENTS Crystal Faux Round Pearls 5810 8mm Dark Purple (25)



SKU: SWP-8024
Project uses 10 pieces

SWAROVSKI ELEMENTS Mini Crystal Pear Pendant 6128 10mm Crystal (6)



SKU: SWC-99974
Project uses 4 pieces

Antiqued Brass Small Oval Filigree Stamping 26mm x 19mm (4)



SKU: FCO-7052
Project uses 4 pieces

Brass Oxide Finish Pewter Large Classic Hook 32 x 15.5mm (1)



SKU: FCL-9058
Project uses 1 piece

Antiqued Brass Open Jump Rings 5mm 20 Gauge (x100)



SKU: FJR-5471
Project uses 9 pieces

Antiqued Brass Open Eye Pins 22 Gauge 2 Inch (x50)



SKU: FHP-6287
Project uses 20 pieces

Bali Style 1 Ball Antiqued Brass Earring Hooks (50)



SKU: FEA-4035
Project uses 2 pieces

Specialized Tools

Beadsmith Jeweller's Micro Pliers Chain Nose Flat Nose



SKU: XTL-5511

Beadsmith Jewelry Fine Round Nose Micro Pliers



SKU: XTL-5514

Xuron Sharp Flush Cutter Pliers - Wire/Soft Flex



SKU: XTL-5600

Wire Looping Pliers - Concave And Round Nose



SKU: XTL-5032

Instructions:

These instructions will make the whole set: A pair of earrings and the necklace.

This project uses a lot of simple wire loops. Watch the video here to help you perfect your simple wire loops.

1. Cut the chain to give you a piece that is 9" and one that is 6". Set aside.
2. Begin by making all the pearl link pieces, then later we will attach them with the chain.
3. To make one link: take your eye pin and add (in this order) 10mm pearl, bead cap facing down, bead cap facing up, 10mm pearl. Create a simple wire loop, but don't close it all the way. Set aside. For the completed set, repeat this link 9 more times, for a total of 10.
4. To make the link with the 8mm pearl simply place the pearl onto the eye pin and create a simple wire loop. Repeat 9 more times; a total of 10.
5. For the earrings: attach the pear crystal pendant to a jump ring. Before you close the jump ring, attach it to your 8mm pearl simple wire loop. Now close the jump ring. Take the other side of the eye pin that is going thru your 8mm pearl and attach it to the 10mm pearl link, the same way you would attach a jump ring.
6. Now take your link containing the crystal, 8mm pearl and 10mm pearl link and attach it to the brass oval at the bottom of the oval, vertically, using the simple wire loop at the top of your link. Be sure to have the front side of the oval facing out. All you have left to do is open the earring finding hook at close it around the top of the oval. You have made one earring. Repeat this earring process to create one more to complete your pair.
7. For the necklace: begin by creating the pearl link chain. Attach the simple wire loops of the links you have already created in this order: 10mm link, 8mm pearl. Repeat 3 times.
8. On the fourth link you will attach a pear crystal to the end of the 8mm pearl using a jump ring.
9. On the top loop of the fourth link attach the links in reverse order: 8mm pearl, 10mm link. Repeat 3 times.
10. You should now have something resembling a Y shape, with both side identical.
11. At the top of each point of the Y, you will attach the brass oval by opening a jump ring, and closing it around the simple wire loop of the top pearl link and the bottom of the brass oval. Be sure to have the front side of the oval facing out.
12. To the top side of the brass oval, connect the chain using another jump ring. One side use the 9" chain, for the other oval attach the 6" chain.
13. To the end of the 6" chain, open a jump ring and attach the large hook. Close the jump ring.
14. For the 9" side, you will use a jump ring to attach one more complete link of 10mm pearl, 8mm. pearl, a jump ring and a crystal pear pendant.
15. To wear this necklace you can attach the hook where ever you would like on the chain, so that the dangle at the end of the chain can hang just down the neck.

Variations

When choosing a color variation for this project, I recommend finding two colors that are complementary in the same shade.

When substituting in items, pay attention to sizes and styles to make sure all your pieces will fit together.



Keywords: Downton Abbey, Vintage look, purple, lilac, brass, bead caps, pearls, SWAROVSKI ELEMENTS, btq-vintagebook