

## Quest Ring

### Project R8008

*Alexandra Smith*

A beautiful balance of rustic and refined is met in this antiqued silver Gita ring setting featuring a light turquoise Swarovski Crystal fancy stone. This quick and easy project is created using G-S Hypo Cement, no tools needed!

### What You'll Need

Gita Jewelry Stone Setting for Swarovski Crystal, Wave Ring Base for SS39 Chatons, 1 Piece, Antiqued Silver

SKU: FRG-1072

Project uses 1 piece



Swarovski Crystal, 1088 Xirius Round Stone Chatons ss39, 6 Pieces, Light Turquoise F

SKU: SWCH-639604

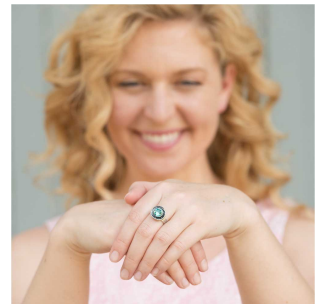
Project uses 1 piece



G S Hypo Cement Precise Applicator Essential!

SKU: XTL-1001

Project uses 1 piece



### Instructions

1. Please watch the video: How to Use Glue to Set Swarovski Crystal Fancy Stones into Gita Jewelry Components. Following the technique shown in this video, use G-S Hypo Cement to set your ss39 Swarovski Crystal fancy stone into your Gita antiqued silver ring setting. Allow at least one hour for the glue to dry. Enjoy your ring!