

## Tuffet Ring - Pink

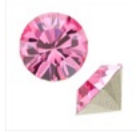
**Project R625**  
*Designer: Julie Bean*

Reminiscent of a petite tuffet or decadent sugary confection, this ring is a beautiful and luxe statement piece. The SWAROVSKI ELEMENTS crystal chatons sparkle brilliantly and the Nunn Designs adjustable ring setting is as pretty on the backside as it is on the front.



### What You'll Need

SWAROVSKI ELEMENTS 1028 Xilion Round Stone Crystal Chatons pp24/3.1mm Rose (36)



SKU: SWCH-12482  
Project uses 17 pieces

SWAROVSKI ELEMENTS 1028 Xilion Round Stone Crystal Chatons ss24 Rose (12)



SKU: SWCH-22482  
Project uses 1 piece

SWAROVSKI ELEMENTS 1028 Xilion Round Stone Crystal Chatons pp10/1.7mm Rose 50



SKU: SWCH-11082  
Project uses 17 pieces

Fine Silver Plated Pewter Bell Flower Bead Caps 11.5mm (x 2)



SKU: BMB-3635  
Project uses 1 piece

Nunn Design Ant. Silver Plated Pewter Bezel Round Adjustable Ring Floral 28.5mm



SKU: FRG-0871  
Project uses 1 piece

Crystal Clay 2-Part Epoxy Clay Kit 'Cotton Candy' 25 Grams



SKU: TRC-233  
Project uses 1 piece

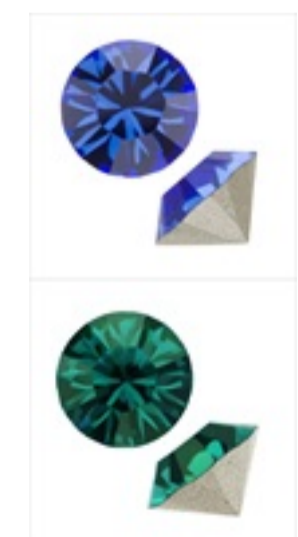
### Instructions:

1. The making of this ring is demonstrated from start to finish in the tutorial: How to Make a Tuffet Ring using Crystal Clay, Chatons, and a Bezel Ring.
2. Please watch the video and make the ring according to the instructions.
3. Let cure overnight.
4. Enjoy!

### Variations

Choose a different color of Crystal Clay or Chatons for a variation on this pretty ring.

When substituting in items, pay attention to sizes and styles to make sure all your pieces will fit together.



**Keywords:** crystal clay, epoxy clay, mixed media, SWAROVSKI ELEMENTS, chatons, pointed back rhinestones, btq-allthatglitters