

Tuffet Ring - Violet

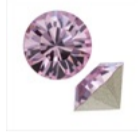
Project R624
Designer: Julie Bean

Reminiscent of a petite tuffet or decadent sugary confection, this ring is a beautiful and luxe statement piece. The SWAROVSKI ELEMENTS crystal chatons sparkle brilliantly and the Nunn Designs adjustable ring setting is as pretty on the backside as it is on the front.



What You'll Need

SWAROVSKI ELEMENTS 1028 Xilion Round Stone Crystal Chatons pp24/3.1mm Lt Amethyst (36)



SKU: SWCH-12492
Project uses 17 pieces

SWAROVSKI ELEMENTS 1028 Xilion Round Stone Crystal Chatons pp10/1.7mm Lt Amethyst 50



SKU: SWCH-11092
Project uses 17 pieces

SWAROVSKI ELEMENTS 1028 Xilion Round Stone Crystal Chatons ss24 Lt Amethyst (12)



SKU: SWCH-22492
Project uses 1 piece

Crystal Clay 2-Part Epoxy Clay Kit 'Violet' 25 Grams



SKU: TRC-250
Project uses 1 package

Nunn Design Ant. Gold Plated Pewter Bezel Round Adjustable Ring Floral 28.5mm



SKU: FRG-0870
Project uses 1 piece

Brass Oxide Finish Pewter Bell Flower Bead Caps 11.5mm (2)



SKU: BMB-5718
Project uses 1 piece

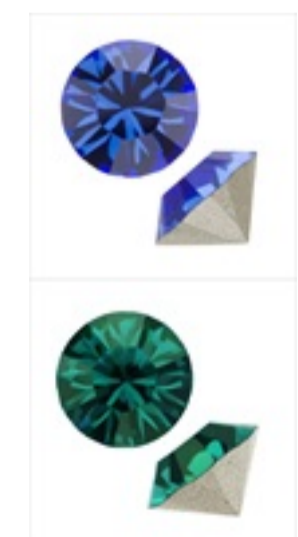
Instructions:

1. The making of this ring is demonstrated from start to finish in the tutorial: How to Make a Tuffet Ring using Crystal Clay, Chatons, and a Bezel Ring.
2. Please watch the video and make the ring according to the instructions.
3. Let cure overnight.
4. Enjoy!

Variations

Choose a different color of Crystal Clay or chatons for a variation on this pretty ring.

When substituting in items, pay attention to sizes and styles to make sure all your pieces will fit together.



Keywords: crystal clay, epoxy clay, mixed media, SWAROVSKI ELEMENTS, chatons, pointed back rhinestones, ring