

Peachy Picnic Ring

Project R2035

Kat Silvia

This snake style ring is easy to personalize with a duo of Swarovski Crystal Chatons.

What You'll Need

Gita Jewelry Stone Setting for Swarovski Crystal, Snake Ring Base for SS29 & SS39 Chatons, Rhodium Plated

SKU: FRG-1062

Project uses 1 piece



Swarovski Crystal, 1088 Xirius Round Stone Chatons ss29, 12 Pieces, Crystal Ocean DeLite

SKU: SWCH-629593

Project uses 1 piece



Swarovski Crystal, 1088 Xirius Round Stone Chatons ss39, 6 Pieces, Crystal Peach DeLite

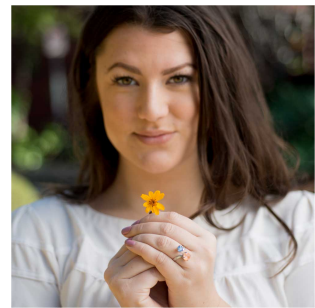
SKU: SWCH-639594

Project uses 1 piece



Recommended Tools:

[STICK-PKIT-00] Natural Wood Craft Sticks, Flat with Rounded Edge 4.5 Inches, 10 Sticks



Instructions

1. To learn how to set the stones into the ring setting with a popsicle stick, please watch our video: [How to Make a Ring with Gita Settings for Swarovski Crystals.](#)