

## Quite an Affair Ring

### Project R1015

Designer: Megan Milliken

Make a statement with this dazzling cocktail ring. The iridescent blue glass button and rhinestone chain will be sure to draw some attention!

### What You'll Need

Engraved Glass Round Buttons With Swirl - Blue AB Over Jet - 23mm Diameter (2)

SKU: PND-0155

Project uses 1 piece



Gold Tone Brass 30mm Round Bezel Adjustable Ring (1)

SKU: FRG-0850

Project uses 1 piece



SWAROVSKI ELEMENTS Gold Plated Rhinestone Cup Chain 24PP Crystal AB - BY THE FT

SKU: CHA-2022

Project uses 1 foot



Crystal Clay 2-Part Epoxy Clay Kit 'Gold' 25 Grams

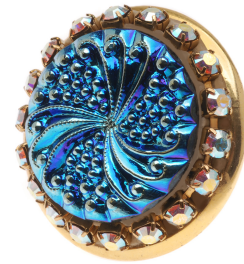
SKU: TRC-238

Project uses 1 piece



#### Recommended Tools:

[XTL-5600] Xuron Sharp Flush Cutter Pliers - Wire/Soft Flex



## Instructions

1. Watch the instructional video: How to Use Crystal Clay.
2. Prepare a piece of gold crystal clay and smooth it into the gold tone bezel ring base.
3. Press the blue engraved glass button into the center of the bezel until the button shank rests against the bottom of the bezel.
4. Smooth the clay around the edges of the button, removing any excess.
5. Cut a piece of crystal AB gold plated rhinestone chain long enough to fit in the space around the button and press it into place. Press it down until the rhinestones sit (slightly angled toward the edge of the bezel) at the same level as the button.
6. Allow the clay to fully cure before wearing.