



The beaded portion of this design measures 5.75". The clasp and chain extender can add up to another 2.5". If you want even more length, you can add rows of beads to either side of this design; striped green and gold beads would look nice!

1. To see how to complete this project from start to finish, please watch our video: [How to Make the Beaded Loom Bracelet Kits by Beadaholique](#). In this video you will see how to set up your Jewel Loom, follow along with the pattern and finish the bracelet. Although this is not a kit design, it is the same techniques that are used to make this loom bracelet. Please see our Printer Friendly PDF for Full Color Beading Pattern. We recommend waiting at least 24 hours before wearing to allow the glue to fully set.
2. To make the extra little dangle near the chain extender end, place a round PRESTIGE crystal bead onto a head pin. Start to create a wrapped wire loop after the bead but before making your wrappings, connect it onto the jump ring with the gold dangle at the end of the clasp. Now finish your wrappings and trim the wire tail. Happy holidays!

WHAT YOU'LL NEED: (scroll down for purchase options)

- JSK-0023 - Toho Round Seed Beads 11/0 #36 'Silver Lined Green Emerald' 8g
Project uses 1 tube. You will need 1 package(s).
- JSK-0277 - Toho Round Seed Beads 11/0 #PF557 'Galvanized Starlight' 8g
Project uses 1 tube. You will need 1 package(s).
- JSK-0231 - Toho Round Seed Beads 11/0 #45A 'Opaque Cherry' 8g
Project uses 1 tube. You will need 1 package(s).
- JSK-0026 - Toho Round Seed Beads 11/0 #41 Opaque White 8 Gram Tube
Project uses 1 tube. You will need 1 package(s).
- FCL-9309 - Beadalon Slide Connectors, with Extension Clasps for Multi-Strand Projects 26x5mm, Gold (1 Set)
Project uses 1 set. You will need 1 package(s).
- XCR-13E3 - Toho One-G Nylon Beading Thread, White (125 Yard Spool)
Project uses 1 piece(s). You will need 1 package(s).
- XTL-1054 - E6000 Industrial Strength Glue Adhesive (0.18 fl oz)
Project uses 1 piece(s). You will need 1 package(s).

Christmas Festivities Loom Bracelet (PROJ-JB-B0020)
Skill Level: Intermediate

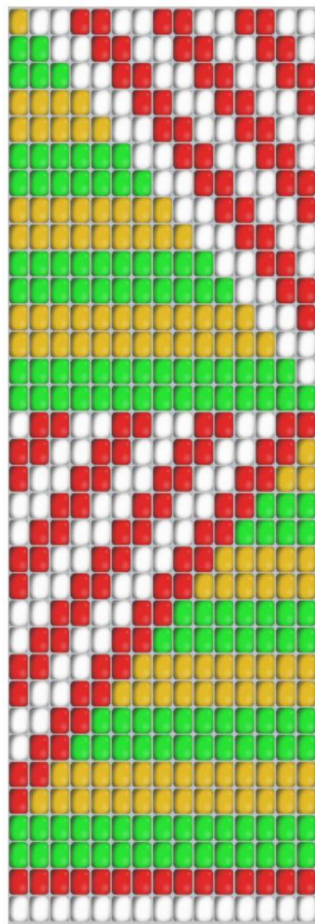
Designer: Julie Bean

- FHP-3022 - Head Pins, with Ball Head 2 Inches Long and 21 Gauge Thick, 22K Gold Plated (20 Pieces)
Project uses 1 piece(s). You will need 1 package(s).
- PRES-5000-MAG6 - PRESTIGE Crystal, #5000 Round Bead 6mm, Majestic Green (1 Piece)
Project uses piece(s). You will need 1 package(s).

RECOMMENDED TOOLS:

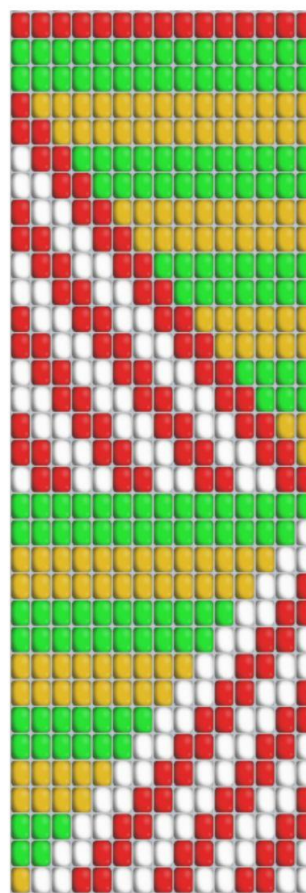
- XTL-0034 - Wubbers Classic Series Round Nose Quality Jeweller's Pliers
- XTL-5450 - Xuron Jeweler's Super Fine Pliers Chain Nose Flat Nose
- XTL-5600 - Sharp Flush Cutter Pliers - For Cutting Beading Wire (1 Piece)
- XTL-6119 - Beadalon Jewel Loom Kit - Weave Necklaces Bracelets And More!

Christmas Festivities Loom Bracelet



← Start beading here

Continue beading here



The white stripe is the center of the bracelet. This is the midway point. Now go to the other half of the pattern and continue your beading