



Note: The beadwork and slide ends combined afford a length of 5.75 inches. When you add the lobster clasp, the bracelet becomes 6.5 inches when attached to the first jump ring on the extender chain. When attached to the last jump ring, the bracelet can be as long as 8.5 inches.

1. First, please refer to the pattern provided for this project. Start with as much thread as you are comfortable with as you will most likely need to tie off and add more thread as you go. I needed two lengths of thread that were each about 5 - 6 feet long to make this bracelet.
2. Next, watch the video: [How to Use the Jewel Loom Beading Loom](#). This will teach you how to actually do the loom work with your beads as well as how to thread your loom.
3. The next video to watch is: [How to Tie Off and Add More Thread in Loom Work](#). Tie off and add more thread as needed. Then also tie off your threads at the end.
4. Please then watch: [How to Make the Loom Bracelet Duo Kits by Beadaholique](#). You do not need to watch the whole video and will want to start at the 25 minute point which shows you how to cut your loom piece off the loom, tie the knots on the end, and then attach your clasp. This is a very detailed video and will walk you through exactly how to finish your bracelet. Based on the three above videos, and using your pattern, you will be able to complete this project. Enjoy!

WHAT YOU'LL NEED: (scroll down for purchase options)

- JSK-0277 - Toho Round Seed Beads 11/0 #PF557 'Galvanized Starlight' 8g Project uses 1 tube. You will need 1 package(s).
- JSK-0404 - Toho Seed Beads, Round 11/0 Semi Glazed, Turquoise (8 Gram Tube) Project uses 1 tube. You will need 1 package(s).
- JSK-0246 - Toho Round Seed Beads 11/0 51F 'Opaque Frosted Lt Beige' 8 Gram Tube Project uses 1 tube. You will need 1 package(s).
- JSK-0418 - Toho Seed Beads, Round 11/0 Semi Glazed, Rainbow Soft Blue (8 Gram Tube) Project uses 1 tube. You will need 1 package(s).

The Morris Bracelet (PROJ-JB-B0007)
Skill Level: Intermediate

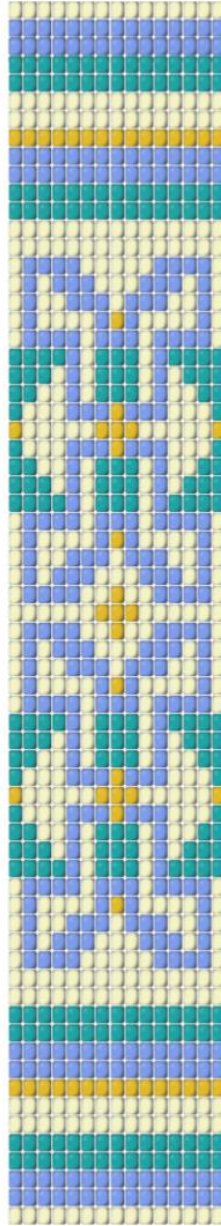
Designer: Julie Bean

- XCR-23FJ - NYMO Nylon Beading Thread Size D for Delica Beads "White"
64YD/58 Meters
Project uses 1 piece(s). You will need 1 package(s).
- XTL-1054 - E6000 Industrial Strength Glue Adhesive (0.18 fl oz)
Project uses 1 piece(s). You will need 1 package(s).
- FCL-9309 - Beadalon Slide Connectors, with Extension Clasps for Multi-Strand
Projects 26x5mm, Gold (1 Set)
Project uses 1 set. You will need 1 package(s).

RECOMMENDED TOOLS:

- XTL-6119 - Beadalon Jewel Loom Kit - Weave Necklaces Bracelets And More!
- XTL-0373 - Tulip Premium Scissors, Gold Handle 5-Inch

The beadwork and slide ends combined afford a length of 5.75 inches. When you add the lobster clasp, the bracelet becomes 6.5 inches when attached to the first jump ring on the extender chain. When attached to the last jump ring, the bracelet can be as long as 8.5 inches.



The Morris Bracelet