

Emerald Isle Color Blocked Medallion Necklace

Project N818

Julie Bean

This simple yet striking necklace features seed beads that have been added to beading chain in a color blocked pattern. The finishing touch is a Nunn Design bezel pendant artfully filled with coordinating seed beads arranged in a circular design.

What You'll Need

Matte Gold Plated Fine Snake Beading Chain 1mm Bulk By The Foot

SKU: CHA-99911

Project uses 16 inches



22K Gold Plated Cord Ends / 2 x 3mm Crimp Beads W Loop (100)

SKU: FCR-1321

Project uses 2 pieces



22K Gold Plated Sleek Lobster Claw Clasps 9mm (10)

SKU: FCL-2529

Project uses 1 piece



22K Gold Plated Open Jump Rings 4mm 20 Gauge 22k Gold Plated (100)

SKU: FJR-3914

Project uses 2 pieces



22K Gold Plated Open Jump Rings 5mm 20 Gauge (100)

SKU: FJR-5250

Project uses 1 piece



Exclusive Beadaholique Designer Palette, Miyuki Delica Seed Bead Mix, 11/0 Size, 28.8 Grams, Emerald Isle Ombre

SKU: JK-0071

Project uses 1 piece



Nunn Design Antiqued Gold Plated Pewter Collage Circle Bezel 1/2 Inch

SKU: PND-6536

Project uses 1 piece



G S Hypo Cement Precise Applicator Essential!

SKU: XTL-1001

Project uses 1 piece



NYMO Nylon Beading Thread Size B for Delica Beads Black 72YD (66 Meters)

SKU: XCR-8932

Project uses 1 piece

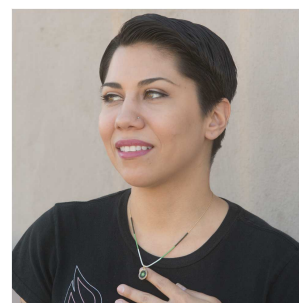


Recommended Tools:

[XTL-4001] Beadsmith Bent Fine Point Tweezers For Bead And Pearl Knotting, [XTL-4003]

Beadsmith Bead And Pearl Knotting Fine Point Steel Awl, [XTL-5600] Xuron Sharp Flush

Cutter Pliers - Wire/Soft Flex, [XTL-5700] Fiskars 5 Precision Tip Scissors - Super Sharp,



[XTL-5450] Xuron Jeweler's Super Fine Pliers Chain Nose Flat Nose, [XTL-5200] Standard Size Beading Crimping Pliers (For 2x2mm & 2x1mm Crimp Beads)

Instructions

1. To make this necklace you will want to watch two video: How to Make a Delicate Seed Bead Color Blocked Chain Necklace and How to Make a Nunn Design Seed Bead Medallion.
2. By watching these two videos, you will learn how to make this entire necklace which includes how to do the color blocking, how to add crimp ends to your beading chain and attach a clasp, and how to make the medallion focal.
3. Enjoy!