

Lovely Eye Necklace in Green

Project N816

Julie Bean

This stunning Swarovski crystal green eye takes center stage in a perfectly matched gold plated pendant setting. The finishing touch to the design is a pretty premade gold plated chain necklace.

What You'll Need

22K Gold Plated Flat Fine Cable Chain Necklace - 2x1.5mm Oval Links (18 Inches)

SKU: AXC-0005

Project uses 1 piece



E6000 Industrial Strength Glue Adhesive (0.18 fl oz)

SKU: XTL-1054

Project uses 1 piece



Swarovski Crystal Fancy Stone Pendant Setting, Fits Eye Fancy Stone, 1 Piece, Gold Plated

SKU: SWCR-4275

Project uses 1 piece



Swarovski Crystal, 4775 Eye Fancy Stone 18x10.5mm, 1 Piece, Digital Print Green

SKU: SWCR-4270

Project uses 1 piece



22K Gold Plated Open Jump Rings 4mm 21 Gauge (x100)

SKU: FJR-5240

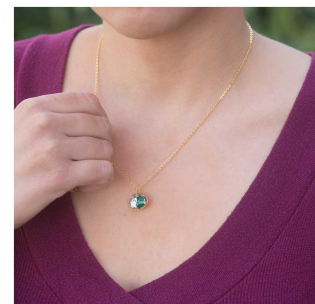
Project uses 1 piece



Recommended Tools:

[XTL-3310] BeadSmith Casual Comfort, Chain Nose Pliers with PVC Handle, 1 Piece,

[XTL-0023] Baby Wubbers Quality Fine Bent Chain Nose Jeweller's Pliers



Instructions

1. To make this necklace, begin by placing a little E6000 glue into the inside base of your eye fancy stone pendant setting. Place the eye fancy stone into the setting and into the glue. Let dry.
2. Once your pendant is dry, open a jump ring and link it to the loop at the top of the pendant as well as around your chain. Close the jump ring.
3. All done, enjoy!