

Clarity of Heart Necklace

Project N8032

Alexandra Smith

Light shines from within this Gita cross pendant, set with Swarovski Crystal ss39 Chaton Fancy Stones, hanging from a rectangular soldered cable chain.

What You'll Need

Swarovski Crystal, 1088 Xirius Round Stone Chatons ss39, 6 Pieces, Crystal Dark Red

SKU: SWCH-639570

Project uses 5 pieces



Swarovski Crystal, 1088 Xirius Round Stone Chatons ss39, 6 Pieces, Crystal AB F

SKU: SWCH-63901

Project uses 1 piece



Gita Jewelry Stone Setting for Swarovski Crystal, Cross Shaped Pendant Base for Six SS39 Chatons, Gold Plated

SKU: PND-304

Project uses 1 piece



Gold Plated Bulk Chain, Tiny Rectangle Soldered Cable Links 3x2mm, By The Foot, Bright Gold

SKU: CHA-0180

Project uses 17.5 inches



22K Gold Plated Curved Lobster Clasps 10mm (6)

SKU: FCL-4720

Project uses 1 piece



22K Gold Plated Open Jump Rings 4mm 22 Gauge (50)

SKU: FJR-5452

Project uses 2 pieces

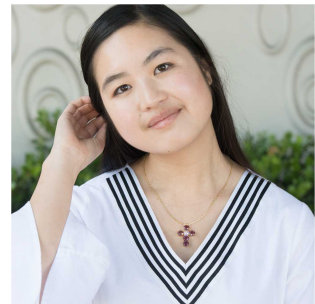


Recommended Tools:

[XTL-0034] Wubbers Classic Series Round Nose Quality Jeweller's Pliers, [XTL-0020] Baby

Wubbers Quality Fine Chain Nose Jeweller's Pliers, [STICK-PKIT-00] Natural Wood Craft

Sticks, Flat with Rounded Edge 4.5 Inches, 10 Sticks



Instructions

These instructions will make an 18 inch necklace. For a longer or shorter necklace, choose your desired chain. Note: for a longer necklace, you may need to buy more chain.

1. Begin by watching the video: How to Make a Connector Focal Necklace with Gita Settings.
2. Using what you have learned in the video, set your Swarovski Crystal ss39 crystal AB chaton into the centermost prong setting of your cross pendant and use a craft stick to gently press the prongs down onto the chaton as shown in the video.

3. Repeat the same process described in step 2 to set five dark red ss39 chatons into the remaining prong settings of your cross pendant.
4. To Hang your pendant: Use flush cutters to cut 17.5 inches of chain. Slide one end of the chain through the top loop of your pendant.
5. Use pliers to open a jump ring and slide on the end link of one side of your chain. Also slide on the loop of your clasp. Close the jump ring.
6. Open another jump ring and slide on the end link on the other side of your chain. Close the jump ring. Enjoy!