

Diamondback Necklace

Project N8024

Alexandra Smith

Glistening 2-hole Ginko beads line up like diamondback snake scales in this flashy bead woven focal necklace. The design showcases the compatibility of Czech glass MiniDuo and SuperDuo beads with Miyuki round 11/0 seedbeads, rolo chain, and a lobster clasp.

What You'll Need

Czech Glass, 2-Hole Ginko Beads 7.5mm, 10 Grams, Crystal Full Labrador

SKU: BCG-105

Project uses 14 pieces



Czech Glass MiniDuo, 2-Hole Beads 2x4mm, 8 Gram Tube, Jet Hematite

SKU: BCT-103

Project uses 13 pieces



SuperDuo 2-Hole Czech Glass Beads, Bronze, 2x5mm, 8g Tube

SKU: BCT-548

Project uses 13 pieces



Miyuki Round Seed Beads, 11/0 Size, 8.5 Gram Tube, #2011 Matte Metallic Blue Grey

SKU: DMRR-2011

Project uses 1 tube



Silver Plated Rolo Chain, 3.7mm, by the Foot

SKU: CHA-9953

Project uses 10 inches



TierraCast Clasps, Lobster 12mm, 4 Pieces, Silver Plated

SKU: FCL-1140

Project uses 1 piece



Silver Plated Open Jump Rings 6mm 20 Gauge (50)

SKU: FJR-5219

Project uses 4 pieces



FireLine Braided Beading Thread, 4lb Test and 0.005 Thick, 15 Yards, Smoke Gray

SKU: XCR-1285

Project uses 6 feet



Wire & Thread Protectors, .019 Inch Loops, 50 Pieces, Silver Plated

SKU: FCR-4160

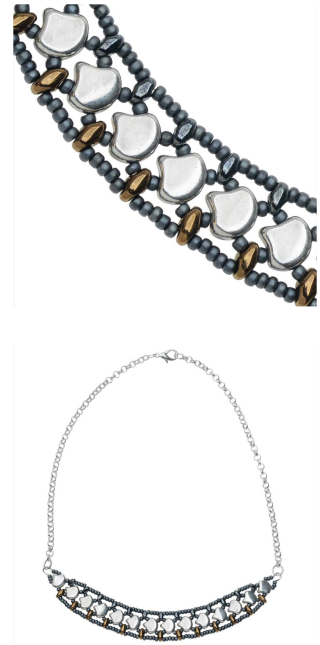
Project uses 2 pieces



Recommended Tools:

[XTL-0373] Tulip Premium Scissors, Gold Handle 5 Inch, 1 Pair, [XTL-0034] Wubbers Classic

Series Round Nose Quality Jeweller's Pliers, [XTL-0020] Baby Wubbers Quality Fine Chain



Nose Jeweller's Pliers, [XTL-3006] The Beadsmith English Beading Needles Size 12 (4 Needles)

Instructions

Please note that some instructions may refer to a video. Search beadaholique.com for the underlined video title or return to this project's page on our website for clickable links.

These instructions will make a 16 inch necklace. For a longer or shorter necklace, adjust the number of beaded units you weave or add your desired lengths of chain on either side.

1. Please watch our video: [How to Make the Diamondback Necklace](#). In this video, you will learn from start to finish how to bead weave the focal using a combination of 2-hole Czech glass Ginko, MiniDuo and SuperDuo beads with Miyuki round seed beads. You will also see how to complete your necklace by using jump rings to attach rolo chain and a lobster clasp.