

Truly In Love Necklace

Project N748 [Skill Level: Beginner]

Designer: Julie Bean

Show your romantic side by wearing this gorgeous SWAROVSKI ELEMENTS heart pendant accented by a sterling silver chain and findings.



What You'll Need

SWAROVSKI ELEMENTS Crystal Truly in Love Heart Pendant 36mm Antique Pink (1)



SKU: SWBB-8596
Project uses 1 piece

Sterling Silver Delicate Long Short Oval Chain 5.2x2.8mm Bulk By The Foot



SKU: CHA-1675
Project uses 24 inches

Sterling Silver Open Jump Rings 5mm 19 Gauge (10)



SKU: FJR-03052
Project uses 2 pieces

Sterling Silver Spring Ring Round Clasps Closed Ring 6mm (10)



SKU: FCL-01061
Project uses 1 piece



Specialized Tools

Beadsmith Jeweller's Micro Pliers Chain Nose Flat Nose



SKU: XTL-5511

Beadsmith Jeweller's Micro Pliers Chain Nose Flat Nose



SKU: XTL-5511



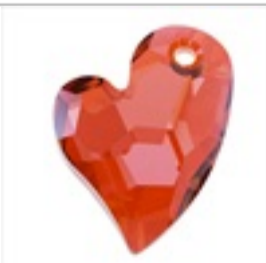
Instructions:

1. To start, watch the video on how to use pinch bails and place your sterling silver pinch bail onto your large SWAROVSKI ELEMENTS heart pendant. Make sure to pinch the bail thoroughly to secure it onto your pendant.
2. Take your 24 inches of sterling silver chain and thread it through the gap between the pinch bail and the heart.
3. Open a jump ring and link it onto the last chain link and the little loop at the base of your spring ring clasp. Close the jump ring.
4. On the other side of your chain, attach another jump ring.
5. So simple but so pretty!

Variations

Choose from a variety of SWAROVSKI ELEMENTS pendants for this project.

When substituting in items, pay attention to sizes and styles to make sure all your pieces will fit together.



Keywords: hearts, romantic, valentines day, sweet, SWAROVSKI ELEMENTS heart, heart pendant, btq-valentine