

## Midnight Gala Necklace

**Project N734** [Skill Level: Intermediate]  
*Designer: Julie Bean*

No one will ever guess that you actually MADE this necklace. The design features a beautiful focal piece filled with sparkling SWAROVSKI ELEMENTS crystal chatons which is then accented by over 100 radiant bicone beads.



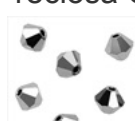
### What You'll Need

Preciosa Czech Crystal Beads 6mm Bicone 'Jet Hematite' (20)



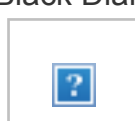
SKU: BCZ-5614  
Project uses 10 pieces

Preciosa Czech Crystal 4mm Bicone Beads 'Jet Hematite' (50)



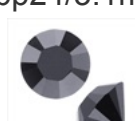
SKU: BCZ-5414  
Project uses 72 pieces

SWAROVSKI ELEMENTS 1028 Xilion Round Stone Crystal Chatons pp32 Black Diamond F (24)



SKU: SWCH-13218  
Project uses 15 pieces

SWAROVSKI ELEMENTS 1028 Xilion Round Stone Crystal Chatons pp24/3.1mm Jet Hematite (36)



SKU: SWCH-124299  
Project uses 14 pieces

Silver Plated Sleek Round Large Box Clasp - 13mm (X5)



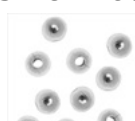
SKU: FCL-5590  
Project uses 1 clasp

Katiedids Silver Plated Scalloped Components - Circle With 2 Holes 25mm (4)



SKU: FCO-9957  
Project uses 1 piece

Silver Plated 3mm Round Metal Beads (100)



SKU: BMB-5052  
Project uses 24 pieces

Beadalon Silver Plated Crimp Tubes 1.3mm (75 Beads)



SKU: FCR-1215  
Project uses 2 pieces

Crystal Clay 2-Part Epoxy Clay Kit 'Dark Purple' 25 Grams



SKU: TRC-236  
Project uses 1 piece

Beadalon Beading Wire Silver Color 7 Strand .015 Inch / 30Ft



SKU: XCR-67523  
Project uses 24 inches

### Specialized Tools

Standard Size Beading Crimping Pliers (For 2x2mm & 2x1mm Crimp Beads)



SKU: XTL-5200

Xuron Sharp Flush Cutter Pliers - Wire/Soft Flex



SKU: XTL-5600

### Instructions:

1. Begin this project by watching the video: [How to Use KatieDids Channel-Set Components with Crystal Clay](#).
2. Based upon what you learned in the video, create your focal piece using your Katiedids component, black Crystal Clay, 24 inches of beading wire, 14 size pp32 chatons in black diamond, and 14 size pp24 chatons jet hematite. Also, take a small ball of mixed black Crystal Clay, smaller than the size of an eraser, and place it on the top of your clasp, in the center. Take 1 size pp32 chaton in black diamond and press this down into your clay ball on the clasp. Let your focal and clasp dry overnight.
3. String onto one side of your necklace one 3mm silver plated round bead and one 6mm Czech Glass bicone in jet hematite. Repeat this sequence 4 more times.
4. Next, string one 3mm silver plated round bead and one 4mm Czech Glass bicone in jet hematite. Repeat this sequence 6 more times.
5. Next, string 30 4mm Czech Glass bicones in jet hematite and one crimp tube. Take your beading wire and string it through the loop on one side of your clasp. Bring the beading wire back around and down through your crimp tube and several beads next to it. Pull snug and crimp your crimp tube. Cut off excess beading wire with flush cutters.
6. Repeat the last 3 steps on the other side of your necklace.
7. Enjoy!

### Variations

Choose from a variety of colors of Crystal Clay for this project. Don't forget to coordinate your SWAROVSKI ELEMENTS chatons to the clay color.

When substituting in items, pay attention to sizes and styles to make sure all your pieces will fit together.



**Keywords:** formal necklace, prom, Katiedids, SWAROVSKI ELEMENTS, crystal chatons, Crystal Clay, sparkling, btq-allthatglitters