

The Jesse Necklace

Project N732 [Skill Level: Intermediate]
Designer: Julie Bean

Sparkling and brilliant, the focal of this necklace is a real show stopper! Two rows of SWAROVSKI ELEMENTS beads beautifully fill out a bright silver plated Katiedids channel-set component with scalloped edge and a sleek silver plated chain completes the look.



What You'll Need

SWAROVSKI ELEMENTS Crystal 5000 4mm Round Beads Indian Pink (12)
SKU: SWC-04098
Project uses 13 pieces

Nunn Design Silver Plated Chain 3.6X4 Flat Cable By The Foot
SKU: CHA-9808
Project uses 24 inches

SWAROVSKI ELEMENTS Crystal 5000 4mm Round Beads Indicolite (12)
SKU: SWC-0451
Project uses 23 pieces

Silver Plated Ball Head Pins 24 Gauge 3 Inches (x20)
SKU: FHP-3011
Project uses 1 piece

SWAROVSKI ELEMENTS Crystal 5000 10mm Round Beads Crystal Satin (6)
SKU: SWC-01078
Project uses 1 piece

Beadalon Beading Wire Silver Color 7 Strand .012 Inch / 30Ft
SKU: XCR-67223
Project uses 2 feet

Katiedids Silver Plated Scalloped Components - Large Round With 3 Holes 35mm (2)
SKU: FCO-9958
Project uses 1 piece

E6000 Industrial Strength Glue Adhesive (0.18 fl oz)
SKU: XTL-1054
Project uses 1 tube

Specialized Tools

Beadsmith Jeweller's Micro Pliers Chain Nose Flat Nose
SKU: XTL-5511

Beadsmith Jewelry Fine Round Nose Micro Pliers
SKU: XTL-5514

Xuron Sharp Flush Cutter Pliers - Wire/Soft Flex
SKU: XTL-5600

Instructions:

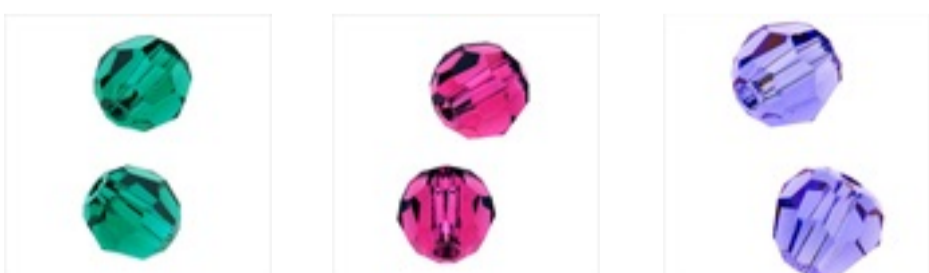
This project makes a 24" necklace without a clasp. If you want a longer necklace, purchase more chain and cut to your desired length.

1. To make this necklace, please first watch the video: How to Use Katiedids Channel-Set Components with Beads
2. Based upon what you learned in the video, make your focal. Start by placing a 10mm SWAROVSKI ELEMENTS round bead in crystal satin onto a ball head pin. Insert the head pin up through the holes in the Katiedids channel-set component and then create a wrapped wire loop on the outside of the connector.
3. Following what you learned in the video, and using beading wire and glue, insert 14 SWAROVSKI ELEMENTS 4mm round beads in indian pink into the center ring. Then repeat the same process inserting 23 SWAROVSKI ELEMENTS 4mm round beads in indicolite into the outer ring.
4. Your chain consists of a bunch of open chain links, meaning that you can open and close these just like jump rings. Open the end chain links and connect these to the wrapped wire loop on the top of your connector to complete your necklace.
5. Enjoy!

Variations

Choose from a variety of SWAROVSKI ELEMENTS 4mm round beads for this project.

When substituting in items, pay attention to sizes and styles to make sure all your pieces will fit together.



Keywords: Katiedids, modern necklace, SWAROVSKI ELEMENTS, ring, btq-allthatglitters