

Golden Goddess Necklace

Project N687
Designer: Julie Bean

Befitting a goddess, this necklace features a large dazzling SWAROVSKI ELEMENTS crystal pendant in golden shadow. Suspending the pendant is a soft gold colored bail hanging from a fern shaped connector. A long textured chain completes the look.



What You'll Need

SWAROVSKI ELEMENTS Crystal Navette Pendant #6110 40x18mm Golden Shadow (1)



SKU: SWC-9962
Project uses 1 piece

Antiqued 22K Gold Plated Pewter Nouveau Pinch Bail For Pendants 12mm (2)



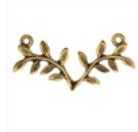
SKU: FCO-3224
Project uses 1 piece

Nunn Design Antiqued Gold Plated Textured Cable Chain By The Foot



SKU: CHA-9806
Project uses 3 feet

Nunn Design Antiqued Gold Plated Pewter Fern Connector Bar 33mm (1)



SKU: FCO-3472
Project uses 1 piece



Specialized Tools

Beadsmith Jeweller's Micro Pliers Chain Nose Flat Nose



SKU: XTL-5511



Instructions:

1. To start, gently pull apart your gold plated pinch bail so that the gap is wide enough to slip over the top of your SWAROVSKI ELEMENTS navette pendant in crystal golden shadow.
2. Slide the bail over the middle part of your Nunn Design antique gold plated fern connector link. Next, slide it over the top of the SWAROVSKI ELEMENTS navette pendant, positioning the bail so that it fits into the holes of the pendant, and pinch it so that it securely holds the pendant.
3. Your chain consists of a series of open links which can be used just like jump rings. Open one of the end chain links and connect it to one of the side loops of your fern connector. Close the link back up. Repeat this on the other side of your necklace.
4. There is no need for a clasp.
5. All done!



Variations

Choose a different color of SWAROVSKI ELEMENTS crystal navette pendants for this design.

When substituting in items, pay attention to sizes and styles to make sure all your pieces will fit together.



Keywords: simple and elegant, beginner project, quick and easy