

## A Touch of Glitz Necklace

**Project N677**

Designer: Julie Bean

This necklace features a very pretty and very sparkly focal bead that you make yourself using SWAROVSKI ELEMENTS crystal chatons, a Nunn Design bead core, and Crystal Clay. This design is so pretty yet so easy to make!

### What You'll Need

22K Gold Plated Venetian Box Chain Necklace With Clasp - 16 Inches



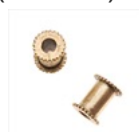
SKU: AXC-98899  
Project uses 1 piece

Crystal Clay 2-Part Epoxy Clay Kit 'White' 25 Grams



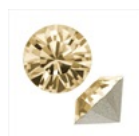
SKU: TRC-251  
Project uses 1 package

Nunn Design Antiqued 22K Gold Plated Large Hole Channel Bead Core 13mm (1 Bead)



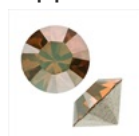
SKU: BMB-9000  
Project uses 1 piece

SWAROVSKI ELEMENTS 1088 Xirius Round Stone Crystal Chatons pp14 Golden Shadow F (40)

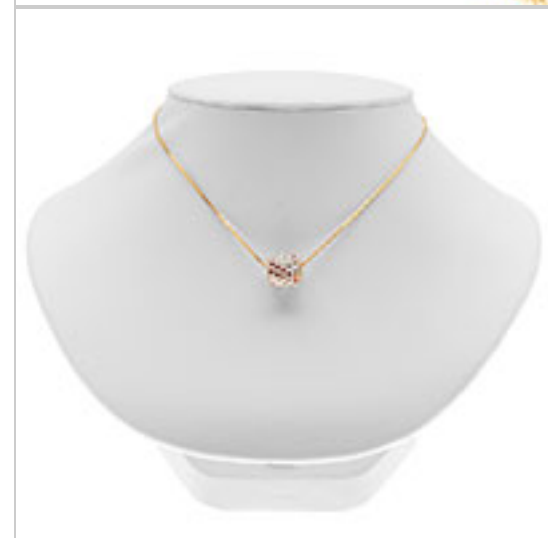


SKU: SWCH-51408  
Project uses 35 pieces

SWAROVSKI ELEMENTS 1088 Xirius Round Stone Chatons pp14 Crystal Copper F (40)



SKU: SWCH-51413  
Project uses 30 pieces



### Instructions:

1. To begin this project, please watch the video: How to Use Nunn Design Bead Cores to Make a Crystal Pave Bead. The main focal point of this necklace is shown in this video.
2. Make your bead according to what you learned in the video. Let dry overnight.
3. String your crystal pave bead onto your pre-made 22k gold plated venetian box chain necklace.
4. Enjoy!

### Variations

Make this same necklace but in a different metal finish or other chaton colors.

When substituting in items, pay attention to sizes and styles to make sure all your pieces will fit together.



**Keywords:** nunn design, nunn, bp-nunndesign