

Colette's Choker

Project N6001

Designer: Suki Song

This elegant and enchanting choker is perfect for a fun Halloween night. Delicate white flowers serve as a feminine backdrop for the bewitching Lolita Skeleton.

What You'll Need

Silver Plated Ornate Five Bead Strand Reducer Connector (2)

SKU: FCO-1532

Project uses 2 pieces



Bright Silver Plated Curb Chain 5mm x 6mm 20 Gauge Bulk By The Foot

SKU: CHA-99962

Project uses 4 inches



Beautiful Silver Plated Curved Lobster Clasps 10mm (10)

SKU: FCL-2513

Project uses 1 piece



Silver Plated Open Jump Rings 5mm 20 Gauge (x100)

SKU: FJR-5150

Project uses 2 pieces



Miyuki Delica Seed Beads 11/0 'Matte Black Opaque' DB310 7.2 Grams

SKU: DB-310

Project uses 2 tubes



Miyuki Delica Seed Beads 11/0 'Matte Opaque Cream' DB762 7.2 Grams

SKU: DB-762

Project uses 1 tube



Nunn Design Antiqued Silver Plated Oval Bezel Cup Pendant Lace Edge 25x18mm x2

SKU: PND-6762

Project uses 1 piece



Lucite Oval Cameo Black With Cream Lolita Skeleton 18x 25mm (2 Pieces)

SKU: SPCB-4031

Project uses 1 piece



Fireline Braided Beading Thread .006 In. - Smoke Grey - 15 Yards

SKU: XCR-1285

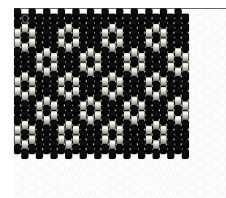
Project uses 1 piece



E6000 Industrial Strength Glue Adhesive (0.18 fl oz)

SKU: XTL-1054

Project uses 1 piece



Recommended Tools:

[XTL-5511] Beadsmith Jeweller's Micro Pliers Chain Nose Flat Nose, [XTL-5514] Beadsmith Jewelry Fine Round Nose Micro Pliers, [XTL-5700] Fiskars 5 Precision Tip Scissors - Super Sharp

Instructions

1. Before you begin, watch the video: How to do Flat Even Count Peyote Stitch. This video will demonstrate the stitch you will use to make this necklace.
2. When you begin your first row, leave an extra long tail so that it will be easier to attach the strand reducers later. A tail of about 2 feet should be plenty.
3. Using size 11/0 Delica seed beads in Matte Black Opaque, and Matte Opaque Cream, follow the pattern in the chart to complete the 24 bead wide floral design. You will notice that it is a repeating pattern, so the illustration included in this project only shows you one inch. Just keep repeating the pattern over and over, until you make your desired length. Please note that there are a couple extra rows of black beads that start the necklace and do not repeat. I did 10 1/4 inches of beadwork. The strand reducers and the lobster clasp added an inch and a half, and then I added a 4 inch chain length, so this necklace can be anywhere from 12 inches, to 16 inches in length.
4. To attach the strand reducers, start at the beginning of your beadwork, using the tail that you left at the beginning.
5. Taking your thread, weave back through the first 3 black beads on the very edge of your beadwork (they will look staggered) and catch the first ring of the strand reducer.
6. Weave down through the next 5 black beads (again, just following that outer edge), come up and catch the second loop, weave back through the next 4 black beads.
7. Come up and catch the third loop, and go back through the next 5 black beads.
8. Come up and catch the fourth loop, and back through the next 5 black beads.
9. Come up and catch the final fifth loop, and back through the final 2 black beads.
10. Now you will turn around your thread, and weave back through the process, all the way back to the first loop to reinforce your strand reducer. Tie off your thread. By the end, you should have two threads through each loop.
11. To attach the other strand reducer to the other side of the necklace, simply repeat this process. Make sure to keep the strand reducer placement even. You will want to keep a good tension on the thread to keep the clasp secure.
12. Tie off and weave in all of your thread tails.
13. After the strand reducers are secure, you'll want to add the chain. Open a jump ring, attach it to one of the strand reducers and the lobster clasp.
14. I cut 4 inches of chain for this project, but you can use your discretion. Open a jump ring, and attach it to the other strand reducer and the chain.
15. Take your Lolita Skeleton lucite, and place a drop of E6000 glue onto the flat back. Place it in the Bezel Cup Pendant, and apply pressure.
16. Afterwards, center the lucite along with the pendant onto your peyote stitch, and add a drop of E6000 glue to attach. Apply even pressure and hold for at least one minute.
17. Let it dry overnight!

Loom Pattern

