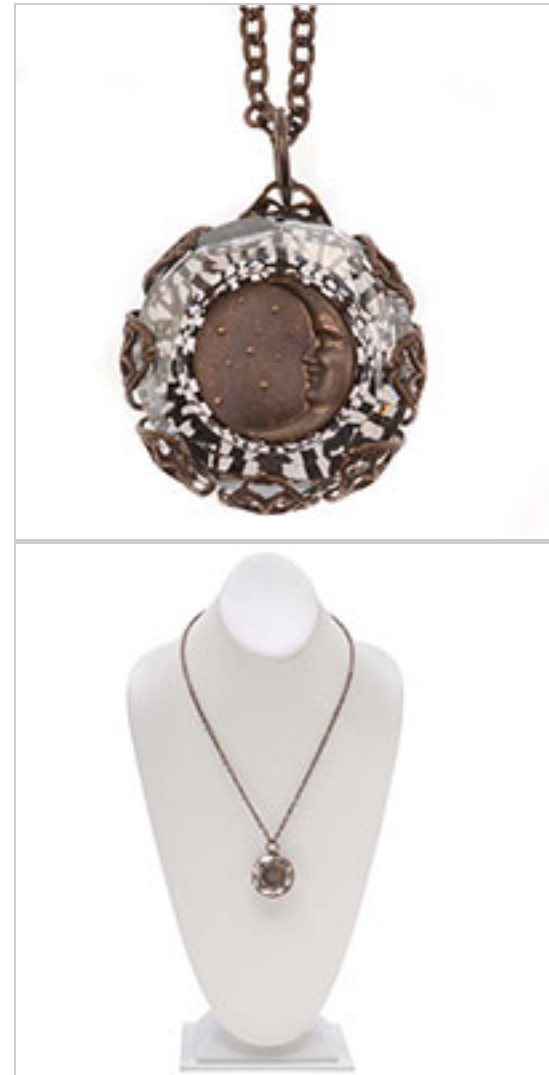


Cherished Moon

Project N546

Designer: Kathy Mannix

This mesmerizing necklace features a serene Vintaj moon charm nestled into a Swarovski cosmic ring, then surrounded by a fabulous Vintaj filigree.



What You'll Need

SWAROVSKI ELEMENTS Crystal Cosmic Ring Pendant #4139 30mm Crystal (1)



SKU: SWC-9030
Project uses 1 piece

Vintaj Natural Brass Round Moon Face Charm 18mm (1)



SKU: PND-7152
Project uses 1 piece

Vintaj Natural Brass Passion Flower Petal Filigree Stamping 45mm (1)



SKU: PND-7005
Project uses 1 piece

Vintaj Natural Brass Jump Rings 10mm Open 16 Gauge (10)



SKU: FJR-5331
Project uses 1 piece

Vintaj Natural Brass Tiny Hook And Eye Clasps 21mm (4 Sets)



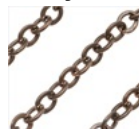
SKU: FCL-4642
Project uses 1 piece

Vintaj Natural Brass Jump Rings 4mm Open 21 Gauge (25)



SKU: FJR-5340
Project uses 1 piece

Vintaj Natural Brass Chain 4mm x 3.5mm Flat Cable Links - Bulk By The Foot



SKU: CHA-7140
Project uses 1 piece

E6000 Industrial Strength Glue Adhesive (0.18 fl oz)



SKU: XTL-1054
Project uses 1 piece

Specialized Tools

Xuron Sharp Flush Cutter Pliers - Wire/Soft Flex



SKU: XTL-5600

Beadsmith Jeweller's Micro Pliers Chain Nose Flat Nose



SKU: XTL-5511

Beadsmith Jewelry Fine Round Nose Micro Pliers



SKU: XTL-5514

E6000 Industrial Strength Glue Adhesive (1/2 Oz)



SKU: XTL-1053

Instructions:

1. A note before beginning: The Swarovski crystal cosmic ring can easily be chipped or scratched as you wrap the brass filigree around it - be aware of this and make sure to work slowly and carefully. Do not rush the process.
2. Lay your Vintaj filigree flat so that the "wrong" side is facing upwards. Center your cosmic ring in the middle. See the photo and get a good idea of how much of the brass petals we are going to be curving up and around the outer edge of the cosmic ring. Remove the cosmic ring and then taking your round nose pliers, start curving one of the Vintaj petals up and around. Use the natural curve of the round nose pliers to ease the brass petal into a curve. Repeat with each petal. What you want are the petals to be curved up enough that you are creating a bowl to set your cosmic ring into, but not so curved that you can not fit the ring inside.
3. On one of the petals, use your round nose pliers and curve about 1/8 inch of the tip in the opposite direction that you have been curving. This will be where you will attach a jump ring and your chain later. See photo.
4. At this point, put away your round nose pliers, you are going to gently be using your fingers from this point on to shape the petals. Place your cosmic ring in the filigree "bowl" you created. You do not need to use adhesive since the filigree petals will hold the ring in place. GENTLY ease each petal around the side of your cosmic ring, just press and squeeze with your finger. It helps if as you work, you go back and forth between petals which are opposite each other instead of next to each other, it balances the piece. Do this until every petal is molded around the ring except for the one you curved in the opposite direction in the previous step.
5. Take your moon charm and using your flush cutters, snip off the charm hook. Place a dab of E6000 glue on the back of the moon charm and then press into place in the center of the cosmic ring. Let dry.
6. Open a 10mm jump ring and link it through the open filigree work at the tip of the petal you bent back. Close the jump ring.
7. Cut a 20 inch length of chain. Thread one end of chain through the jump ring attached to your pendant.
8. On each end of the chain, attach a jump ring. Open each jump ring and link it to the loop at the bottom of each clasp half. You're finished!