

Noel Necklace

Project N518

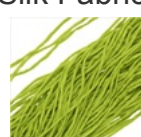
Designer: Kathy Mannix

Swarovski Olivine briolettes and traditional green and red silk cord make this a must have for your holiday outfit.



What You'll Need

Silk Fabric String 2mm Peridot Green 42 Inch Strand (1)



SKU: XCR-46098
Project uses 1 piece

Silk Fabric String 2mm Crimson Red 42 Inch Strand (1)



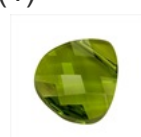
SKU: XCR-46008
Project uses 1 piece

SWAROVSKI ELEMENTS Flat Crystal Briolette Beads #6012 11x10mm Olivine (2)



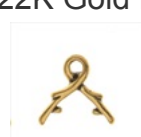
SKU: SWC-4346
Project uses 2 pieces

SWAROVSKI ELEMENTS Flat Crystal Briolette Beads #6012 15x14mm Olivine (1)



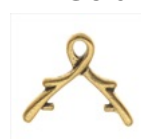
SKU: SWC-4446
Project uses 2 pieces

22K Gold Plated Pewter Bail For 11mm SWAROVSKI ELEMENTS Briolette (4)



SKU: FCO-3016
Project uses 2 pieces

22K Gold Plated Pewter Bail for 15mm SWAROVSKI ELEMENTS Briolette (4)



SKU: FCO-3019
Project uses 1 piece

Gold Plated 3mm Fancy Crimp Beads Cord Ends with Loop (4)



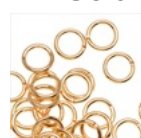
SKU: FCR-4215
Project uses 1 piece

22K Gold Plated Open Jump Rings 4mm 21 Gauge (x100)



SKU: FJR-5240
Project uses 5 pieces

22K Gold Plated 6mm 19 Gauge Open Jump Rings (100)



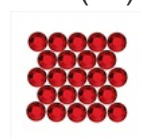
SKU: FJR-5260
Project uses 1 piece

Batik Beauties Fabric Beads Red/Gold Metallic Accent 1/2 In. (2)



SKU: PND-1003
Project uses 3 pieces

SWAROVSKI ELEMENTS Crystal Flatback Rhinestones #2058 Xilion SS9 Light Siam (72)



SKU: SWF-40986
Project uses 18 pieces

E6000 Industrial Strength Glue Adhesive (0.18 fl oz)



SKU: XTL-1054
Project uses 1 piece

Set of 6 Big Eye Beading Needles in 4 Sizes - Easiest Needles To Thread!



SKU: XTL-3165
Project uses 1 piece

Instructions:

1. Start by laying out all 6 fabric beads (PND-1003) on a flat surface. Now, pick up one of the crystal flatbacks (SWF-10986) with a pair of tweezers (XTL-4000). Use a toothpick to dab a small dot of glue (XTL-1053) onto the flatback. You will use 3 crystals per fabric bead. Place one crystal in the center of the fabric bead. Next, place the other 2 flatbacks evenly spaced around the center of the fabric bead (see photo). You have at least 5 minutes to make adjustments before the glue starts to set. For maximum strength bond, allow 24-72 hours for complete curing.
2. Next, open one of the big eye needles (XTL-3165) and thread about 2 inches of the green silk cord (XCR-46098) through the eye.
3. Thread the needle through one of the red fabric beads until it is about half way down the cord. Remove the needle from the green cord.
4. This time open the eye of the need and thread about 2 inches of the Red cord (XCR-46008) through the eye. Thread through the fabric bead you just placed on the green cord. Remove the needle from the red cord.
5. Repeat the previous 3 steps to place the other fabric bead on the two cords. Slide 2 fabric beads in the center about a 1/2 inch apart from one another at the very center of the 2 cords (See Photo).
6. Take one of the crimp ends (FCR-4215). Use a pair of chainnose pliers to bend the loop slightly, be careful not to bend too much, as the loop can break off.
7. Open the eye of the needle and thread about 2 inches of one side of both cords through the eye. Thread through one of the crimp ends and slide down next to the fabric bead leaving about a 1/2 inch space. Use a pair of chainnose pliers to crimp the very center of the crimp end to hold it in place on both of the cords.
8. Repeat the previous steps until all of the fabric beads and the crimp ends are evenly distributed on both of the cords (about a 1/2 inch apart starting at the center of the cords).
9. Slightly open one of the small bails (FCO-3016) and line up to the holes on either side of one of the small Swarovski briolettes (SWC-4346). Squeeze the bail on both sides with your fingers until it is snug against the sides of the briolette.
10. Repeat previous step for the larger bail (FCO-3010) and larger Swarovski briolette (SWC-4446).
11. Open one of the small gold plated jump rings (FJR-5240). Link the jump ring onto both the loop of one of the crimp ends and one of the small bails (FCO 3016) with the Swarovski briolette.
12. Repeat the previous step for the other 3 crimp ends and bails.
13. Open one large gold plated jump ring (FJR-5260). Attach the jump ring to the very center of the necklace between the 2 red fabric beads and the large bail (FCO-3019) with Swarovski briolette (SWC-4446).
14. Now just make a regular knot every inch to inch and a half above the red fabric beads.
15. You're finished!

Please refer to photo for more detailed information about this project.