

Autumn Sunshine Necklace

Project N510

Designer: Kathy Mannix

It's a pretty "transparent" Swarovski crystal and filigree necklace.



What You'll Need

Dark Brown Color Coated Brass Filigree Stamping By Ezel - Nouveau Crest Pendant 42mm



SKU: PND-00087
Project uses 1 piece

Nunn Design Antiqued Gold Plated Pewter Fern Connector Bar 33mm (1)



SKU: FCO-3472
Project uses 1 piece

SWAROVSKI ELEMENTS Crystal Flat Baroque Pendant #6091 38x26mm Crystal Silver Shade (1)



SKU: SWC-9911
Project uses 1 piece

22K Gold Plated Lovely Leaf Pinch Bail 21.5mm (1)



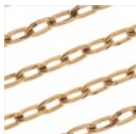
SKU: FCO-3062
Project uses 1 piece

22K Gold Plated Pewter Tiny Oak Leaf Charm 10.5mm (4)



SKU: PND-5440
Project uses 1 piece

Nunn Design Antiqued Gold Plated Oval Cable Chain 3mm By The Foot



SKU: CHA-9814
Project uses 18 inches

14K Gold Filled Open Jump Rings 4mm 21 Gauge (10)



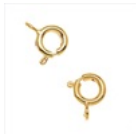
SKU: FJR-03045
Project uses 3 pieces

14K Gold Filled Open Jump Rings 5mm 21 Gauge (10)



SKU: FJR-03055
Project uses 1 piece

22K Gold Plated Spring Ring Clasps 7mm (25!)



SKU: FCL-1571
Project uses 1 piece

Instructions:

1. Open one of the small jump rings (FJR-3045). Link the jump ring onto the left side loop of the gold leaf connector (FCO-3472) and to the hole at the left side of the widest point of the brown filigree stamping (PND-00087). Close the jump ring.
2. Open the other small jump ring and link onto the right side of the gold leaf connector and through the hole on the right side of the filigree at the widest point. Close the jump ring. (see photo)
3. Open the leaf bail (FCO-3062) with your chain nose pliers just enough so you can fit it over the top of the Swarovski crystal (SWC-9911) without it scraping it. Align the small prongs inside the bail over the hole in the pendant and the hole at the top of the brown filigree piece. Gently squeeze the bail closed with your fingers. You can also use a pair of nylon chain nose pliers to make sure it is snug. Do not press too hard, to avoid damaging the crystal.
4. Thread the gold plated chain (CHA-9814) through the large hole at the top of the leaf bail.
5. Open a small jump ring. Link the jump ring onto loop of the spring ring (FCL-1571) and to the end of the chain. Close the jump ring.
6. Open the larger jump ring (FJR-3055). Link the jump ring to the other end of the chain and to the loop of the small leaf charm (PND-5440). Close the jump ring. You're finished!



Please refer to the photo for more detailed information about this project.