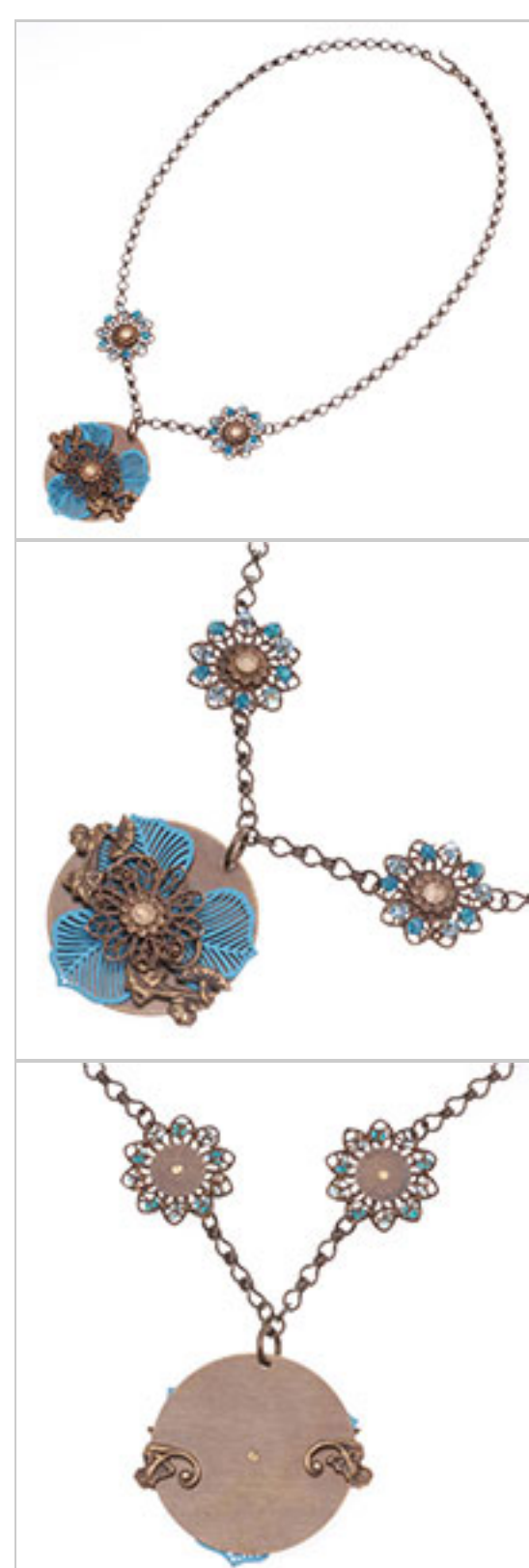


Pressed Flowers Necklace

Project N503

Designer: *Kathy Mannix*

Gorgeously colored filigree, antiqued brass and a touch of crystal evoke the feelings of finding a pressed flower in your grandmother's old diary.



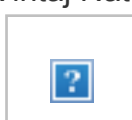
What You'll Need

Turquoise Blue Color Coated Brass Filigree Stamping By Ezel - Trillium Flower 30mm (1)



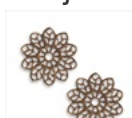
SKU: PND-9977
Project uses 1 piece

Vintaj Natural Brass Deco Vines Filigree Stamping 57x15mm (1)



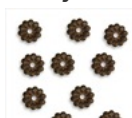
SKU: PND-7183
Project uses 1 piece

Vintaj Natural Brass Fastenables Filigree Flower Stamping 20mm (2)



SKU: PND-7259
Project uses 3 pieces

Vintaj Natural Brass Decorative Pinwheel Washer Flowers 7.5mm (10)



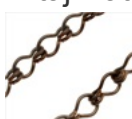
SKU: PND-7265
Project uses 3 pieces

Vintaj Natural Brass 1/4 Inch Nail Head Rivets (20 Pieces)



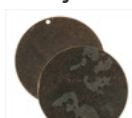
SKU: FCO-4674
Project uses 3 pieces

Vintaj Natural Brass Chain 4mm x 6.5mm Ladder Chain - Bulk By The Foot



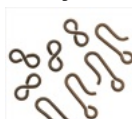
SKU: CHA-7170
Project uses 2 feet

Vintaj Natural Brass Rustic Altered Blank Circle Pendants 34mm (2)



SKU: PND-7058
Project uses 1 piece

Vintaj Natural Brass Tiny Hook And Eye Clasps 21mm (4 Sets)



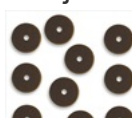
SKU: FCL-4642
Project uses 1 piece

Vintaj Natural Brass Jump Rings 7.25mm Open 16 Gauge (20)



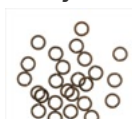
SKU: FJR-5372
Project uses 1 piece

Vintaj Natural Brass Decorative Standard Washer 9.5mm (10)



SKU: PND-7267
Project uses 2 pieces

Vintaj Natural Brass Jump Rings 4mm Open 21 Gauge (25)



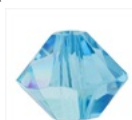
SKU: FJR-5340
Project uses 5 pieces

SWAROVSKI ELEMENTS Crystal #5301 3mm Bicone Beads Caribbean Blue Opal (25 Beads)



SKU: SWC-1325
Project uses 10 pieces

SWAROVSKI ELEMENTS Crystal #5328 3mm Bicone Beads Aquamarine AB (25 Beads)



SKU: SWBB-1336
Project uses 10 pieces

Specialized Tools

Eurotool Parallel Hole Punch Pliers For Sheet Metal (1.5mm Hole)



SKU: XTL-0046

Solid Metal Bench Block - Wire Hardening and Wire Wrapping Tool



SKU: XTL-6092

Jeweler's Mini Ball Pein Hammer - 2 1/2 Inch Head - Metal Smithing



SKU: XTL-0002

Instructions:

- Start with the round altered blank (PND-7058). Make a small dot at the very center of the blank with a marker. Using your hole punch pliers (XTL-0046) punch a hole through the dot. Also punch a hole in the center the blue flower (PND-9977) then place on top of the blank. Be sure the hanging hole is at the top.
- Center the vine filigree piece on top of the flower. Press the two sides of the vine filigree with your fingers until they are bent around the blank. Use your nylon chain nose pliers (XTL-6020) to press and tighten the vine filigree flat. You can still move the blue flower, making sure to keep it centered even after you have placed the vine filigree piece.
- Now take one of the rivets (FCO-4674), thread on one of the 3 small daisy washers (PND-7265) face down on the rivet, then a brass flower filigree also face down over the daisy washer you just placed.
- Take the rivet and place through the hole on the front of the altered blank round that already has the vine filigree and blue flower.
- Flip over the entire piece and slide it on your steel bench block (XTL-6092) being careful to keep the rivet in place by holding your finger over it. Trim the end of the rivet, leaving just 1/16th of an inch above the back of the altered blank.
- Use your mini ball pein hammer with the flat side (XTL-0002) and tap the rivet gently to flatten until it spreads and is flush with the back of the altered blank.
- Now put the larger open jump ring (FJR-5372) through the top hole of the piece you just finished and close.
- Next, take one of the 2 remaining rivets and place a small daisy washer face down as you did before. Place the rivet through the center hole of one of the 2 remaining brass filigree flowers. This time you will put a plain brass washer (PND-7267) on the back of the brass filigree flower. Trim off part of the rivet making sure to leave 1/16th of an inch. Use your mini ball pein hammer and tap the rivet gently to flatten until it is flush with the plain brass washer. Repeat this entire step with the remaining brass filigree flower.
- Cut off 2 pieces of 26 gauge brass wire (WCR-4226) 10 inches long. Set one piece aside. Thread the other piece of 26 gauge wire through the front of the brass filigree flower using one of the top 2 holes of the flower petal. Leave about a 1/4 of an inch sticking out of the back. Bend the 1/4 inch piece over to anchor it for a moment. This helps to anchor the wire while you weave on the Swarovski crystal 3mm bicones (it doesn't matter which color you pick first, as you will be using 5 of each.)
- Thread a 3mm Swarovski crystal bicone onto the front part of the wire. Thread the wire back through the second hole of the same petal. Now bring the wire through the back of the next petal on one side of the tip of the petal as before. Add a bicone on the other crystal color onto the wire, then put the wire through the second hole of the tip, front to back. You have now put bicones on two petals. Repeat this process for every petal, alternating crystal colors. When you finish weaving all 10 bicones on to the flower, you should have ended up back at the 1/4 inch wire you started with. Now just twist the wires together with your fingers (just like a twist tie on a loaf of bread).
- Cut off the remaining wire leaving about a 1/8th of an inch. Lay it flat on the back squeezing it gently with a pair of chain nose pliers to flatten it down.
- Repeat these steps with the other brass filigree flower.
- Cut off 2 pieces of chain (CHA-7170) at 6 and 1/2 inches each. Cut off 2 more pieces of chain about 3 links each.
- Open each of the small open jump rings (FJR-5340). Link one of the open jump rings to one of the pieces of chain (6 and a 1/2) you just cut and to one of the brass filigree flower pieces. Make sure the jump ring is centered on top of the brass filigree flower. (HINT: one jump ring should be attached to the center top hole of the petal where an Aqua crystal is and the other will automatically be on the top hole of the Caribbean blue crystal.) (see photo)
- Now attach a small jump ring to one of the 3 link pieces of chain previously cut and to the larger jump ring on the pendant. Close the jump ring.
- Repeat the steps above to the other side of the necklace.
- Use a pair of chain nose pliers to open each loop of the clasp ends (FCL-4642) to attach to the remainder of the chain. Now close the loops. Your necklace is ready to wear.

Please refer to photo for more detailed information about this project.