

## Delicate Heart Necklace

### Project N3071

Designer: Karlin Jones

Make this delicate and feminine Swarovski crystal heart necklace in a few simple steps and add a little sparkle to your Valentine's Day attire.

### What You'll Need

Swarovski Crystal, 6240 Wild Heart Pendants 12mm, 2 Pieces, Indian Pink

SKU: SWBB-3609

Project uses 1 piece



Sterling Silver Fine Snake Chain 18 In. x .9mm Necklace

SKU: AXC-9180

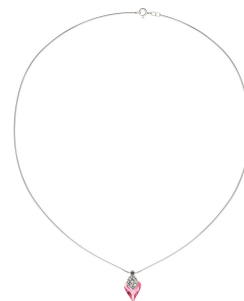
Project uses 1 piece



Silver Toned Brass Pinch Bail with Leaf, 12.5mm Glass Rhinestone Encrusted, 1 Piece

SKU: FCO-128

Project uses 1 piece



### Instructions

1. Before you begin, watch the video on How to Use a Pinch Bail.
2. Following what you learned in the video, attach your crystal encrusted bail onto your pink Swarovski crystal pendant and close.
3. Open the clasp on your sterling silver 18" finished chain and slide it through your crystal encrusted bail and close.
4. That's it!