

Unbreakable Heart Pendant Necklace

Project N3034 [Skill Level: Beginner]

Designer: Karlin Jones

This statement necklace features a dazzling SWAROVSKI ELEMENTS Forever 1 Heart crystal pendant on a sterling silver chain. Imbedded in the “broken” portion of the heart, is a line of Fuchsia Crystal Clay with a row of sparkly Fuchsia chatons.



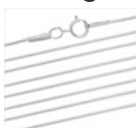
What You'll Need

SWAROVSKI ELEMENTS Crystal 6263 Forever 1 Heart Pendant 36mm Satin (1)



SKU: SWBB-8602
Project uses 1 piece

Sterling Silver Fine Snake Chain 20 In. x .9mm Necklace



SKU: AXC-9186
Project uses 1 piece

Sterling Silver Sleek 14mm Stone & Crystal Pinch Pendant Bail (1)



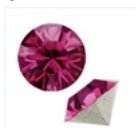
SKU: FCO-4056
Project uses 1 piece

Crystal Clay 2-Part Epoxy Clay Kit 'Fuchsia' 25 Grams



SKU: TRC-237
Project uses 1 piece

SWAROVSKI ELEMENTS 1028 Xilion Round Stone Crystal Chatons pp24/3.1mm Fuchsia (36)



SKU: SWCH-12484
Project uses 6 pieces

Specialized Tools

Bead And Pearl Knotting Tweezers Great Price



SKU: XTL-4000

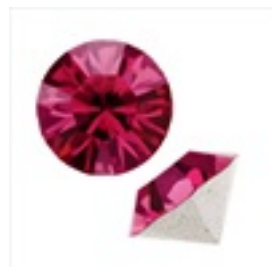
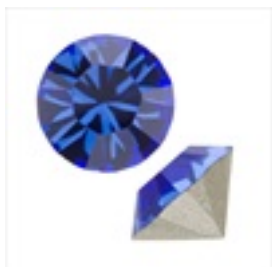
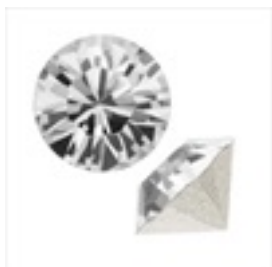
Instructions:

1. Begin by watching the video on How to Use Crystal Clay.
2. Based upon what you learned in the video, mix up a pea size amount of Fuchsia Crystal Clay. Look at the photo of this project and press the Fuchsia clay into the “broken” line of your SWAROVSKI ELEMENTS heart. Make sure to keep the area neat and clean, avoiding getting any Crystal Clay on the surface edges of your heart pendant.
3. Next, using your tweezers, carefully pick up a fuchsia rhinestone chaton and carefully place it into the row of Crystal Clay, starting right underneath where the bail is going to be. Add 5 more chatons, following the design of the crevice. See photo.
4. Watch the video on How To Use A Pinch Bail. Following what you learned in the video, please attach your pinch bail onto your heart pendant.
5. Next, open your sterling silver finished chain and slide that through your bail and close.
6. Let your pendant cure over night.
7. You're done.

Variations

Look through a variety of SWAROVSKI ELEMENTS chatons and choose your favorite color.

When substituting in items, pay attention to sizes and styles to make sure all your pieces will fit together.



Keywords: SWAROVSKI ELEMENTS, pendant, chatons, heart, crystal clay, fuchsia, btq-valentine