

Golden Poppy Pod Necklace

Project N3006 [Skill Level: Beginner]

Designer: Karlin Jones

This ornate chain necklace showcases a lovely poppy seed pendant. It's a simple, yet striking design in gold.



What You'll Need

Matte Gold Plated Curved 12.5mm Bar Scalloped Chain Sold By The Foot
SKU: CHA-98853
Project uses 24 inches



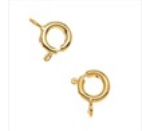
Nunn Design Antiqued Gold Plated Small Poppy Pod Charm 19.5mm (1)
SKU: PND-7995
Project uses 1 piece



14K Gold Filled Open Jump Rings 5mm 21 Gauge (10)
SKU: FJR-03055
Project uses 2 pieces



22K Gold Plated Spring Ring Clasps 7mm (25!)
SKU: FCL-1571
Project uses 1 piece



Specialized Tools

Beadsmith Jeweller's Micro Pliers Chain Nose Flat Nose
SKU: XTL-5511



Instructions:

1. To begin, open your jump ring using your chain nose pliers.
2. Take one end of your chain and link your jump ring onto the last chain link.
3. Now close the jump ring back up.
4. String your gold Nunn Design Poppy Pod pendant onto your chain.
5. Onto the other end of your chain, open and link another jump ring and slide your gold lobster claw clasp onto the jump ring as well.
6. Close the jump ring.
7. Your necklace is now ready!

Variations

These poppy pod pendants come in many pretty variations.

When substituting in items, pay attention to sizes and styles to make sure all your pieces will fit together.



Keywords: gold, poppy, Nunn Design, chain, pod, focal, necklace, , btq-nature