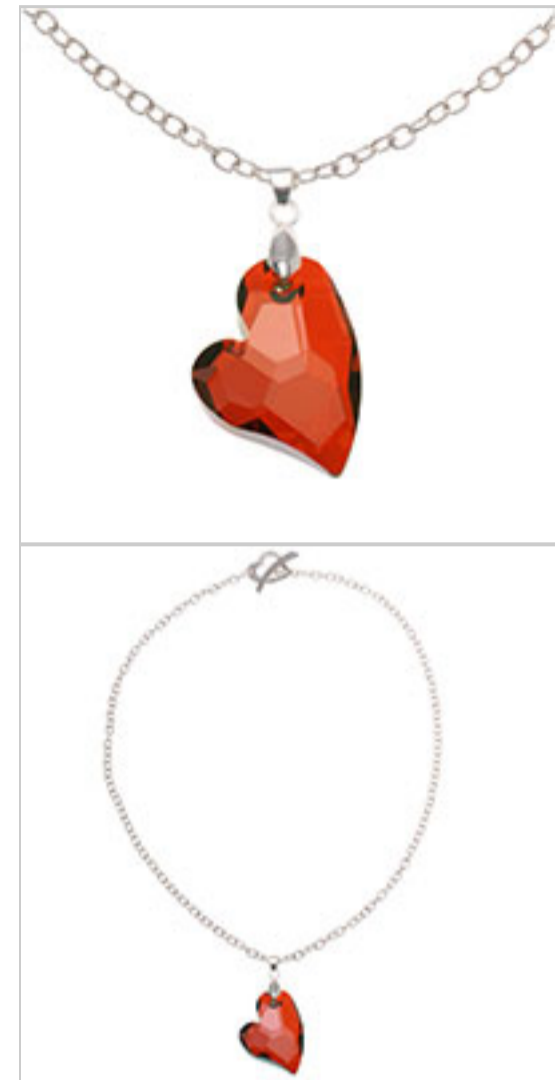


Devoted 2 U Necklace

Project N226

Designer: Andrea Morici

This Swarovski crystal pendant necklace is certainly impressive with its interesting asymmetrical heart focal, full of sparkle and warmth.



What You'll Need

Beadalon Silver Plated 5mm Pinch Slider Bail For Gemstone & Crystal Pendants (6)



SKU: FCO-4000
Project uses 1 piece

Nunn Design Silver Plated Textured Cable Chain 4mm By The Ft



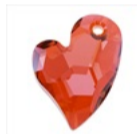
SKU: CHA-9804
Project uses 2 feet

Rhodium Plated Pewter Hammertone Heart Toggle Clasp 22mm (1)



SKU: FCL-7096
Project uses 1 piece

SWAROVSKI ELEMENTS Crystal #6261 Devoted 2 U Heart Pendant 36mm Red Magma (1)



SKU: SWBB-8396
Project uses 1 piece

Silver Plated Open Jump Rings 5mm 20 Gauge (x100)



SKU: FJR-5150
Project uses 2 pieces

Instructions:

1. Please watch our instructional video How to Make a Swarovski Crystal Pendant Necklace to make this dazzling necklace!

Variations:

Choose from different colors or sizes of the Devoted 2 U pendant or substitute a different crystal pendant all together! You can also change your chain style and choose from a wide variety of toggle clasps. Don't forget to match your jump rings and pendant pinch bail.

When substituting in items, pay attention to sizes and styles to make sure all your pieces will fit together.

