

Turquoise Etched Necklace

Project N2241

Kat Silvia

This long Y necklace features Czech Glass Etched Beads in various shapes for an organic feel.

What You'll Need

Czech Glass, Bohemian Aged 6/0 Round Seed Beads, 10 Grams, Etched Blue Turquoise and Vitrail

SKU: BCS-9074

Project uses 46 pieces



Czech Glass Beads, Oval 11x7mm, 15 Pieces, Etched Crystal Full Vitrail

SKU: BCP-260

Project uses 12 pieces



Czech Fire Polished Glass Beads, Faceted Round 4mm, 40 Pieces, Etched Crystal Full Labrador

SKU: BCP-203

Project uses 23 pieces



Zola Elements Pendant Link, Chevron with Charm Loop 29x27.5mm, 2 Pieces, Antiqued Silver Tone

SKU: PNT-061

Project uses 1 piece



Zola Elements Pendant, Graduated Paddle Set On Triangle Ring 21x80mm, Antiqued Silver Tone

SKU: PZE-152

Project uses 1 piece



Artistic Wire, Silver Plated Craft Wire 24 Gauge Thick, 10 Yard Spool, Tarnish Resistant Silver

SKU: WCR-2430

Project uses 1 Spool



Antiqued Silver Plated Open Jump Rings 4mm 21 Gauge (50)

SKU: FJR-5141

Project uses 2 pieces



Antiqued Silver Plated Curved Lobster Claw Clasps 10mm/6

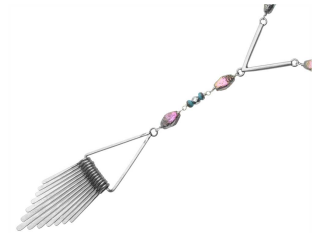
SKU: FCL-2525

Project uses 1 piece



Recommended Tools:

[PL5222] Tronex Tools, Flush Cutter Pliers with Standard Handle and Tip Protector 5 Inches Long, 1 Piece, [PL5130] Tronex Tools, Short Chain Nose Pliers with Standard Handle and Tip Protector 5 Inches Long, 1 Piece, [PL5320] Tronex Tools, Short Round Nose Pliers with Standard Handle and Tip Protector 5 Inches Long, 1 Piece



Instructions

This necklace measures approximately 20 inches. To modify the length, simply adjust the length of wrapped wire loop units on both sides respectively.

1. Cut off 3 inches of wire. Place your pliers about 1 inch from one end. Make a wrapped wire loop. String on one lantern bead. Make another wrapped wire loop, but before closing the wrap, attach it to one loop at the top of the V component. Close the wrap. You can see a similar technique in this video: [How to Make Your Own Gemstone Chain with Wrapped Wire Loops](#).
2. Cut off 3 inches of wire. Place your pliers about 1 inch from one end. Make a wrapped wire loop, attaching it to the previous lantern bead component you just made. String on one seed bead, one 4mm bead, and one seed bead. Make a wrapped wire loop.
3. Continue in this manner, alternating lantern beads and seed bead/4mm bead/seed bead links so that you have 5 lantern beads on one side. Then add 7 seed bead/4mm bead/seed bead links. Repeat this whole pattern on the other side of the V.
4. On the bottom of the V, in the same manner as above, attach one lantern bead link, one seed bead/4mm bead/seed bead link and one lantern link. To the bottom of the final wrapped wire loop, attach the paddle pendant and close the loop.
5. Move to the back of the necklace. Open one jump ring and attach it to one wrapped wire loop. Close the jump ring. Repeat on the other side of the necklace attaching one lobster clasp to the final jump ring before closing it.