

Silver Lining Necklace

Project N2222

Kat Silvia

This cubic right angle weave square provides a fun geometric bead woven focal for this delicate necklace.

What You'll Need

True2 Czech Fire Polished Glass, Faceted Round Beads 2mm, 50 Pieces, Chalk White Matte Labrador

SKU: BCP-00121

Project uses 4 Lots



FireLine Braided Beading Thread, 4lb Test and 0.005 Thick, 15 Yards, Crystal Clear

SKU: XCR-1280

Project uses 1 Spool



Finished Cable Chain Necklace, Fine 2x1.8mm Links with Spring Ring Clasp, 16 Inches, Silver Plated

SKU: AXC-026

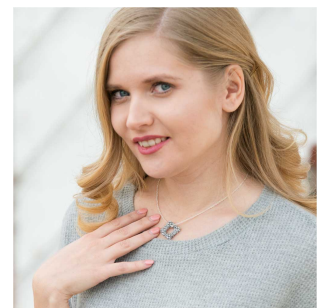
Project uses 1 piece



Recommended Tools:

[XTL-3006] Beadsmith English Beading Needles Size 12 (4 Needles), [XTL-0117] BeadSmith

Ultra Thread Zap, Battery Operated Thread Trimmer, 1 Piece



Instructions

1. To learn how to make the focal of this necklace, please watch our video: [How to Make a Square Shape with Cubic Right Angle Weave](#).

2. Once you have woven the focal, thread the chain through the center so that the focal free flows on the chain.