

Green with Envy Necklace

Project N2206

Kat Silvia

Spooky Swarovski Crystal Eyes peer out from the center of this design for a delightfully wicked Halloween necklace.

What You'll Need

Swarovski Crystal, 4775 Eye Fancy Stone 18x10.5mm, 1 Piece, Digital Print Green

SKU: SWCR-4270

Project uses 2 pieces



Swarovski Crystal Fancy Stone Pendant Setting, Fits Eye Fancy Stone, 1 Piece, Gold Plated

SKU: SWCR-4275

Project uses 2 pieces



Swarovski Crystal, 5328 Bicone Beads 4mm, 24 Pieces, Jet

SKU: SWBI-1415

Project uses 11 pieces



22K Gold Plated Open Jump Rings 4mm 20 Gauge 22k Gold Plated (100)

SKU: FJR-3914

Project uses 4 pieces



Gold Plated Bulk Chain, Round Soldered Links 2mm, By The Foot, Bright Gold

SKU: CHA-0176

Project uses 18 Inches



22K Gold Plated Straight Lobster Claw Clasps 9mm (10)

SKU: FCL-2529

Project uses 1 piece



Artistic Wire, Copper Craft Wire 24 Gauge Thick, 10 Yard Spool, Tarnish Resistant Brass

SKU: WCR-2433

Project uses 1 Spool



E6000 Industrial Strength Glue Adhesive (0.18 fl oz)

SKU: XTL-1054

Project uses 1 piece

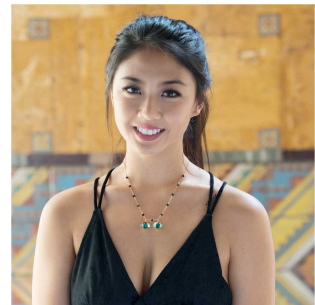


Recommended Tools:

[XTL-5600] Sharp Flush Cutter Pliers - For Cutting Beading Wire, 1 Piece, [XTL-5511]

Beadsmith Jeweller's Micro Pliers Chain Nose Flat Nose, [XTL-5514] Beadsmith Jewelry Fine

Round Nose Micro Pliers



Instructions

1. Begin by placing a dab of glue into the well of one eye setting and placing the eye fancy stone into it. Press into place and set aside to dry. Repeat with

the second eye fancy stone.

2. Next, cut a piece of chain 4.25 inches in length. Cut off a piece of wire about 4 inches in length. Make a wrapped wire loop, but before completing the wrap, attach the wire loop to the chain. String on a bead and make a wrapped wire loop, again attaching it to the rest of your chain.

3. Move 7 chain links down and cut the eighth link. Make another wrapped wire loop link, as done in the previous step. Repeat this step 9 more times for a total of 11 beads on the chain.

4. To the last section, attach a length go 4.25 inches of chain. Move to the end and attach one jump ring.

5. To the beginning side of the chain, attach one jump ring and one lobster clasp.

6. Finally, to attach the eye pendants, find the 5th bead on the chain, count 4 links in and attach the pendant with a jump ring. Then find the 6th bead on the chain, count 4 links in and attach the pendant with a jump ring. Make sure both eyes are facing the same way.