

## The Seeker Necklace

### Project N2203

*Kat Silvia*

This delicate necklace features an eye pendant link from Zola Elements.

### What You'll Need

Beautiful Gold Plated Curved Lobster Clasps 8mm (10)

SKU: FCL-2509

Project uses 1 piece



Antiqued 22K Gold Plated Oval Cable Chain 2mm Bulk By The Foot

SKU: CHA-9631

Project uses 16 Inches



22K Gold Plated Open Jump Rings 4mm 21 Gauge (x100)

SKU: FJR-5240

Project uses 4 pieces



Zola Elements Pendant Link, Mermaid Eye 26x14mm, 1 Piece, Antiqued Gold Tone

SKU: PZE-119

Project uses 1 piece

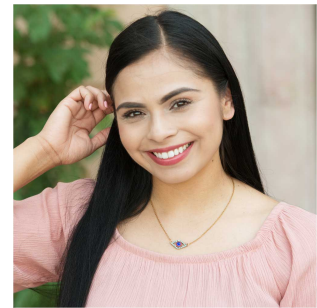


### Recommended Tools:

[XTL-5600] Sharp Flush Cutter Pliers - For Cutting Beading Wire, 1 Piece, [XTL-5511]

Beadsmith Jeweller's Micro Pliers Chain Nose Flat Nose, [XTL-5514] Beadsmith Jewelry Fine

Round Nose Micro Pliers



### Instructions

This necklace measures approximately 17.5 inches. To modify the length, simply adjust the length of chain on both sides respectively.

1. Begin by cutting two lengths of chain, 8 inches each.
2. Open one jump ring and attach it to one loop of the eye link and one end of the chain. Close the jump ring. Repeat on the other side of the eye link with the second length of chain.
3. Move to the end of the chain and attach another jump ring.
4. Then move to the other end of the other length of chain, open and jump ring and attach it to the chain as well as to one lobster clasp. Close the jump ring.