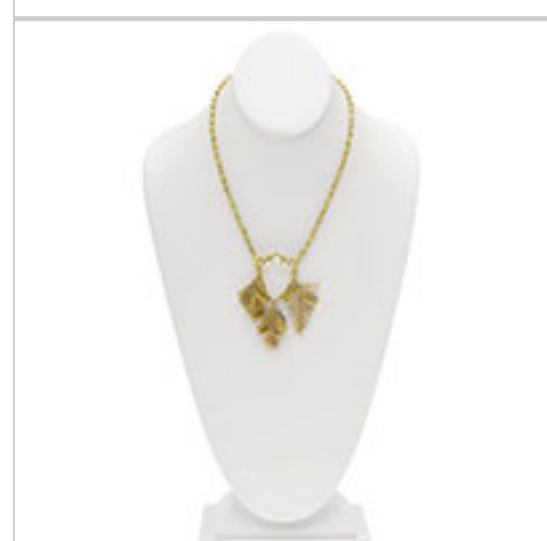


Fern Hill Necklace

Project N220

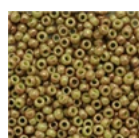
Designer: Andrea Morici

Ferns are one of the loveliest plants in the whole wide world of Flora. Here we have tried to capture the wispy, verdant essence of this pretty plant in our bead-woven Fern Hill necklace.



What You'll Need

Toho Round Seed Beads 11/0 1209 'Marbled Opaque Avocado/Pink' 8 Gram Tube



SKU: JSK-0158
Project uses 190 pieces

Soft Touch Best Beading Wire .010 Inch 30Ft Soft Flex



SKU: XCR-5413
Project uses 2 feet

Crystal Fireline Braided Beading Thread .006 In. 15 Yards



SKU: XCR-1280
Project uses 20 feet

5 Inch Big Eye Beading Needles (Set of 4) - Easy Needle To Thread



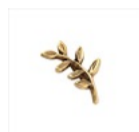
SKU: XTL-3164
Project uses 1 piece

Nunn Design Antiqued Gold Plated Round Toggle Clasp Ring 11mm (1)



SKU: FCL-7510
Project uses 1 piece

Nunn Design Antiqued Gold Plated Fern Leaf Toggle Clasp Bar 20mm



SKU: FCL-7214
Project uses 1 piece

Czech Fire Polish Glass Beads 3mm Round Matte Metallic Gold (50)



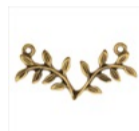
SKU: BCP-33200
Project uses 60 pieces

Czech Glass Druk Round Beads 4mm Lt Olive Picasso (100)



SKU: BCP-74300
Project uses 60 pieces

Nunn Design Antiqued Gold Plated Pewter Fern Connector Bar 33mm (1)



SKU: FCO-3472
Project uses 1 piece

Beadalon Gold Plated Crimp Beads 1.3mm (85 Beads)



SKU: FCR-1200
Project uses 2 pieces

22K Gold Plated Closed Jump Rings 4mm 21 Gauge (50)



SKU: FJR-4024
Project uses 2 pieces

22K Gold Plated Open Jump Rings Oval 4x6mm 20 Gauge (50)



SKU: FJR-3916
Project uses 4 pieces

Specialized Tools

Xuron Sharp Flush Cutter Pliers - Wire/Soft Flex



SKU: XTL-5600

Beadsmith Jeweller's Micro Pliers Chain Nose Flat Nose



SKU: XTL-5511

Fiskars 5 Precision Tip Scissors - Super Sharp



SKU: XTL-5700 - Copy

Double Notch Crimping Pliers - Works on 2mm And 3mm Crimps



SKU: XTL-5230

Instructions:

1. Begin by stitching the central fern part separately. To do this, cut a length of Fireline thread at about six feet long, and single-thread your needle with it.
2. Add a stopper bead to your thread, about 8 inches away from the end.
3. Onto your needle, thread fifty four 11/0 marbled avocado Toho beads. The latter twenty one beads are going to be the center part of the fern frond. Skipping the very last bead (the bead closest to your needle) thread your needle back through the second to last bead.
4. Add two additional seed beads, skip the last bead, go back through other bead, and thread up into one of the center part of the fern frond.
5. Repeat the previous step, with the beads this time coming out of the right side of the frond.
6. Continue to work your way up the center part of the frond like a ladder, adding an extra bead each step up the ladder, creating "leaves" of increasing size on both the left and right sides of the center of the frond. Stop when the "leaves" are ten beads long. This is the right-most frond of your three-frond centerpiece.
7. Thread your needle back through the initial fifty four seed beads, until you are sixteen beads away from the last "leaf" of the fern frond you have just created.
8. Thread an additional twenty one seed beads onto your needle and repeat the steps necessary to create a fern frond here. This is the very middle frond of your three-frond centerpiece.
9. Thread your needle back through the initial fifty four seed beads, until you are sixteen beads away from the last "leaf" of the fern frond you have just created.
10. Thread an additional twenty one seed beads onto your needle and repeat the steps necessary to create a fern frond here. This is the left-most frond of your three-frond centerpiece.
11. Tie your thread in an overhand knot around some thread between two nearby beads, and weave in the remainder of your thread.
12. Remove the stopper bead from the other end of your thread and repeat the previous step.
13. Trim off all excess thread and set the fern centerpiece aside.
14. Open two oval jump rings and thread one each through the loops on either side of the antiqued gold plated fern connector bar. Close the jump rings once more and set the connector aside.
15. Cut a length of Soft Touch very fine beading wire at two feet long.
16. Thread the very end of the wire through your big eye needle and bend it downward. Thread your needle through the center length of seed beads from which the fern fronds hang, and center the entire fern piece on the wire. Remove the needle from the wire.
17. Onto each end of the wire, thread a 4mm mottle green druk, a 3mm gold fire polish bead, and another mottled green druk.
18. Now thread each wire end through each of the oval jump rings connected to the antiqued gold fern connector bar.
19. Onto each half of the necklace, thread on seven and a half inches of alternating mottles green druks and gold fire polish beads. Thread a crimp bead on the end of both halves.
20. Thread the end of both halves of the necklace through its own respective closed jump ring, back through each crimp bead and several consecutive beads on the strand, pull the wire snug, and crimp the beads.
21. Use two more oval jump rings to attach the toggle clasp, one half per necklace side. Trim off all excess wire.