

## Magical Potion Necklace

Project N2197

*Kat Silvia*

Keep your magical potion safely close by with this Nunn Design Itsy Bottle Pendant Necklace.

### What You'll Need

Nunn Design Itsy Bottle, 2 Hole Top Decorative with Cork 39mm, 1 Bottle, Silver Plated

SKU: PND-3327

Project uses 1 piece



Beadelle Collection Crystal Splash Assorted Clear Crystal Mix (1 oz)

SKU: BDLL-9998

Project uses 1 piece



Nunn Design Bulk Chain, Delicate Cable Links 2.5x2mm, By the Foot, Bright Silver

SKU: CHA-0146

Project uses 24 Inches



Silver Plated Open Jump Rings 5mm 20 Gauge (x100)

SKU: FJR-5150

Project uses 4 pieces



Beautiful Silver Plated Curved Lobster Clasps 12mm (10)

SKU: FCL-2513

Project uses 1 piece

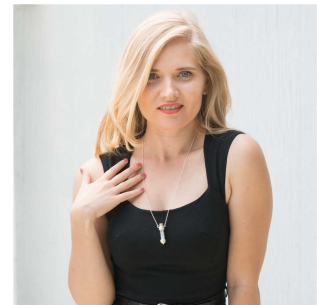


### Recommended Tools:

[XTL-5600] Sharp Flush Cutter Pliers - For Cutting Beading Wire, 1 Piece, [XTL-5511]

Beadsmith Jeweller's Micro Pliers Chain Nose Flat Nose, [XTL-5514] Beadsmith Jewelry Fine

Round Nose Micro Pliers



### Instructions

This necklace measures approximately 24 inches. To modify the length, simply adjust the length of chain on both sides respectively.

1. Begin by removing the cork of the bottle and filling the bottle with crystal splash. Shake it down to let them settle and then add the cork. If you would like, you can add a dab of E6000 to permanently seal the cork in the bottle.
2. Cut the 24 inches of chain into 2 lengths of 12 inches.
3. Open one jump ring and attach it to one loop of the bottle and to one length of chain. Close the jump ring. Repeat on the other side with the second length of chain.
4. Move to one end of the chain and attach another jump ring.
5. Move to the other end of the chain and attach one more jump ring to the end of the chain and to one lobster clasp.