

# Coral Bay Necklace

## Project N2193

*Kat Silvia*

A colorful splash of blue and coral Swarovski Crystal Pearls make this a fun summertime design, perfect for a day time picnic.

## What You'll Need

Antiqued Brass Scalloped Flower Bead Caps 6mm (x50)

SKU: BMB-7060

Project uses 58 pieces



Swarovski Crystal, 5810 Round Faux Pearl Beads 6mm, 50 Pieces, Coral

SKU: SWP-6014

Project uses 30 pieces



Swarovski Crystal, 5810 Round Faux Pearl Beads 8mm, 25 Pieces, Iridescent Dark Blue

SKU: SWP-8037

Project uses 15 pieces



Swarovski Crystal, 5810 Round Faux Pearl Beads 4mm, 50 Pieces, Iridescent Dark Blue

SKU: SWP-4037

Project uses 16 pieces



Antiqued Brass Wire & Thread Protectors .024 Inch Loops (50)

SKU: FCR-4144

Project uses 2 pieces



Antiqued Brass Curved Lobster Clasps 12mm (10)

SKU: FCL-4711

Project uses 1 piece



Antiqued Brass Open Jump Rings 6mm 18 Gauge (x100)

SKU: FJR-5301

Project uses 2 pieces



Beadalon Wire Metallic Bronze 19 Strand .018 Inch / 30Ft

SKU: XCR-69863

Project uses 24 Inches



Antiqued Brass Beading Cone / Strand Reducer 12.5x5.5mm (2 Pieces)

SKU: FCO-1253

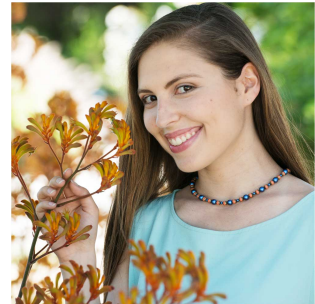
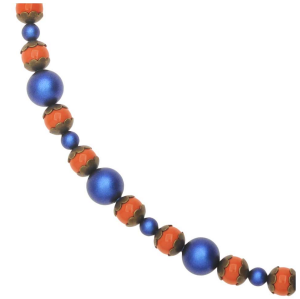
Project uses 2 pieces



Antiqued Brass Economy Crimp Beads 3mm x 2.7mm (50)

SKU: FCR-1262

Project uses 1 piece



**Recommended Tools:**

[XTL-3000] Bead Stopper- Stop Beads Sliding Off Stringing Material, [XTL-5600] Sharp Flush Cutter Pliers - For Cutting Beading Wire, 1 Piece, [XTL-5511] Beadsmith Jeweller's Micro Pliers Chain Nose Flat Nose, [XTL-5608] Xuron 4 In 1 Crimping Pliers - Works On 1, 2 And 3mm Crimps!

**Instructions**

This necklace measures approximately 17.5 inches. To modify the length, simply adjust the length of chain on both sides respectively.

1. Begin by cutting off a length of beading wire, 24 inches in length. Place a bead stopper at one end.
2. String on the beads in the following order: one 4mm blue pearl, one bead cone, one 6mm coral pearl, and one bead cap.
3. Then string on one 8mm blue pearl, one bead cap, one 6mm coral pearl, one bead cap, one 4mm blue pearl, one bead cap, one 6mm coral pearl, and one bead cap. Repeat 13 times.
4. Next string on one bead cap, one 6mm coral pearl, one bead cone, and one 4mm blue pearl.
5. String on one crimp bead. Thread the wire up through one wire protector and back down the other side and through the crimp tube. Pull snug and crimp the crimp tube. Trim any excess wire. Open one jump ring and attach it to one lobster clasp and to the wire protector. Close the jump ring.
6. Move to the other side of the necklace, remove the bead stopper and repeat the above process. This time you will be simply adding one jump ring without adding the lobster clasp.