

City Limits Necklace

Project N2109

Kat Silvia

This wide loom piece acts as a geometric focal and with the added element of a wire wrapped druzy, this long necklace is a festival-worthy design.

What You'll Need

Miyuki Delica Seed Beads 11/0 Metallic Teal Iris DB027 7.2 Grams

SKU: DB-027

Project uses 1 Tube



Miyuki Delica Seed Beads 11/0 Matte Bronze Gold Metallic DB1051 7.2 GR

SKU: DB-1051

Project uses 1 Tube



Miyuki Delica Seed Beads 11/0 Purple Iris DB004 7.2 GR

SKU: DB-004

Project uses 1 Tube



Miyuki Delica Seed Beads 11/0 'Matte Opaque Cream' DB762 7.2 Grams

SKU: DB-762

Project uses 1 Tube



Agate Titanium Druzy Gemstone, Assorted Top-Drilled, Small 17-24mm, 1 Pc, Blue Iris

SKU: SPDR-235

Project uses 1 piece



Miyuki Findings Gold Plated 2 Loop Seed Bead Slide End Tubes 60mm (2)

SKU: FCO-9095

Project uses 1 Set



NYMO Nylon Beading Thread Size D for Delica Beads Ivory 64YD (58 Meters)

SKU: XCR-8900

Project uses 1 piece



22K Gold Plated Slim Rolo Chain 2mm, 1 Piece, 3 Feet

SKU: SCA-99958

Project uses 3 Feet



Beadsmith Tarnish Resistant Gold Color Copper Wire 26 Gauge 34 Yards (31 Meters)

SKU: WNT-2633

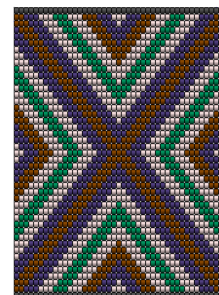
Project uses 12 Inches



22K Gold Plated Open Jump Rings 4mm 21 Gauge (x100)

SKU: FJR-5240

Project uses 5 pieces



Recommended Tools:

[XTL-6117] BeadSmith Ricks Beading Loom Kit For Beginners - Weave Necklaces Bracelets And More!, [XTL-5614] BeadSmith Tools, Thread Snips 4.25 Inches Long, 1 Piece, [XCR-9800] Thread Heaven Thread Conditioner for Beading/Quilting/Crafting, [XTL-3021] Tulip Loom Work Beading Needles 90x0.5mm - 3 Pack, [XTL-5511] Beadsmith Jeweller's Micro Pliers Chain Nose Flat Nose, [XTL-5514] Beadsmith Jewelry Fine Round Nose Micro Pliers, [XTL-5600] Xuron Sharp Flush Cutter Pliers - Wire/Soft Flex

Instructions

Before beginning this project please watch our video: [How to Use the Ricks Beading Loom](#).

1. Set up your loom as seen in the video. You will have 44 warp threads and your bars should be 3 inches apart. Separate your warp threads.
2. Next, to begin the bead weaving, cut off a length of nymo that you are comfortable working with. You will need to tie off and add new thread as you work. Condition the nymo using the Thread Heaven Thread Conditioner by drawing it across the conditioner. Thread your needle.
3. Follow the pattern in the photo above. Begin at the bottom. The grey rows represent the rows that will be covered by the slide ends. You can choose any color to go on these rows. I recommend using the green beads.
4. Work your way up the pattern. When you have finished, carefully slide the loom piece off of your loom. Make sure to tie in all of your tails.
5. Next you will add the Miyuki Slide Ends. Please watch our video: [How to use Miyuki Slide Ends](#), for instructions. Based on what you saw in the video, slide on the ends and use your chain nose pliers to bend the ends down to secure them into place. Set the finished loom piece aside.
6. Cut off 12 inches of wire. Take the druzy pendant and wire wrap it like a briolette. Please watch our video: [How to Wire Wrap a Briolette](#). Set this piece aside.
7. Cut a length of chain, 6 inches long.
8. Open one jump ring and attach it to the bottom loop of one of the slide ends. Attach one side of the 6 inch length of chain. Close the jump ring. Open another jump ring and attach it to the loop on the other side of the same slide end with the other side of this chain. Close the jump ring.
9. Open a jump ring and attach the wire wrapped druzy to the center link of this 6 inch length of chain. Close the jump ring.
10. Take the remaining 30 inches of chain and attach it to the loops of the top slide end using jump rings. This is where you can adjust the length of your necklace. If you want a shorter necklace, simply trim the chain to your desired length. Note: there is no clasp with this design. It is meant to slip right over your head.

Loom Pattern

