

Lucy Necklace Bridal Edition

Project N2002 [Skill Level: Beginner]

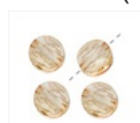
Designer: Julie Bean

Reminiscent of the necklaces popular in the 1950's, this baroque pearl and crystal necklace is simply stunning. The irregularity of the baroque pearls contrasts nicely against the uniformness of the crystal round mini beads.



What You'll Need

SWAROVSKI ELEMENTS Crystal 5052 Round Mini Bead 6mm - Golden Shadow (4)



SKU: SWBB-7507
Project uses 20 pieces

SWAROVSKI ELEMENTS Crystal Faux Baroque Pearls 5840 14mm White (4)



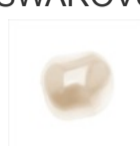
SKU: SWP-5401
Project uses 7 pieces

SWAROVSKI ELEMENTS Crystal Faux Baroque Pearls 5840 12mm White (6)



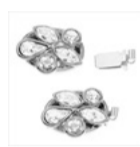
SKU: SWP-5201
Project uses 8 pieces

SWAROVSKI ELEMENTS Crystal Faux Baroque Pearls 5840 10mm White (8)



SKU: SWP-5101
Project uses 6 pieces

Rhodium Plated Oval Box Clasp With Assorted SWAROVSKI ELEMENTS 24x15.5mm



SKU: FCL-4948
Project uses 1 piece

Soft Flex Best Beading Wire .014 Inch WHITE - 30 Ft.



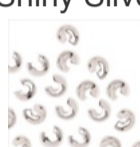
SKU: XCR-5145
Project uses 24 inches

Beadalon Silver Plated Crimp Tubes 1.3mm (75 Beads)



SKU: FCR-1215
Project uses 2 pieces

Shiny Silver Tone Crimp Bead Covers 3mm (x144)



SKU: FCR-1053
Project uses 2 pieces

Specialized Tools

Standard Size Beading Crimping Pliers (For 2x2mm & 2x1mm Crimp Beads)



SKU: XTL-5200

Bead Stopper- Stop Beads Sliding Off Stringing Material



SKU: XTL-3000

Beadsmith Jeweller's Micro Pliers Chain Nose Flat Nose



SKU: XTL-5511

Instructions:

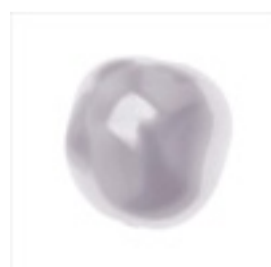
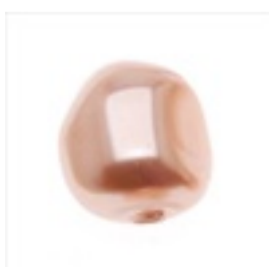
This design makes a 16 inch necklace. To make a longer necklace add additional SWAROVSKI ELEMENTS 10mm white baroque pearls to the back of the necklace.

1. Cut a 24 inch length of beading wire and place a bead stopper 4 inches from one end.
2. String onto your beading wire 1 crimp tube.
3. Next string 1 SWAROVSKI ELEMENTS 10mm white baroque pearl and 1 SWAROVSKI ELEMENTS 6mm round mini bead in crystal golden shadow. Repeat this step 2 more times.
4. Next string 1 SWAROVSKI ELEMENTS 12mm white baroque pearl and 1 SWAROVSKI ELEMENTS 6mm round mini bead in crystal golden shadow. Repeat this step 3 more times.
5. Next string 1 SWAROVSKI ELEMENTS 14mm white baroque pearl and 1 SWAROVSKI ELEMENTS 6mm round mini bead in crystal golden shadow. Repeat this step 2 more times.
6. String 1 SWAROVSKI ELEMENTS 14mm white baroque pearl. This is the middle point of your necklace, now string your remaining beads so that the second half of your necklace is a mirror image of the first. See the photo for help.
7. Take your beading wire and thread it through the loop on one side of your clasp. Bring the wire back around and down through the crimp bead and several beads adjacent to it. Crimp the crimp bead and snip off excess wire with flush cutters. Take a crimp bead cover and place it over the top of the crimp bead. Secure into place with chain nose pliers.
8. Go to the other side of your necklace, remove the bead stopper, and repeat the previous step.
9. Enjoy!

Variations

There are lots of wonderful colors of SWAROVSKI ELEMENTS baroque pearls to choose from to complete this project - pick your favorite!

When substituting in items, pay attention to sizes and styles to make sure all your pieces will fit together.



Keywords: Pearl, pearl necklace, vintage, mini beads, baroque pearls, SWAROVSKI ELEMENTS, btq-bridal, btq-vintagelook