

Windfall Necklace

Project N188

Designer: Andrea Morici

With its mixture of warm antiqued copper and brass and its rich cluster of Swarovski crystal and lucite leaves, this necklace is the perfect Autumn accessory.



What You'll Need

Antiqued Copper Plated Cable Chain 3.4mm Bulk By The Foot



SKU: CHA-9672
Project uses 2 feet

Bali Copper Small S-Hook Twist Clasps 18mm x 7mm (4)



SKU: FCL-5015
Project uses 1 piece

SWAROVSKI ELEMENTS 6735 Crystal Leaf Pendant Topaz 32x20mm (1)



SKU: SWC-9134
Project uses 1 piece

Lucite Maple Leaves Matte Ruby Red Light Weight 19mm (6)



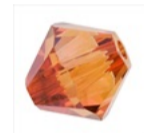
SKU: BCP-4312
Project uses 1 piece

Lucite Aspen Leaves Matte Smokey Topaz Brown Light Weight 16mm (4)



SKU: BCP-4323
Project uses 1 piece

SWAROVSKI ELEMENTS Crystal Beads, 5328 Bicone, 4mm, 24 Pieces, Crystal Copper



SKU: SWBI-1413
Project uses 1 piece

SWAROVSKI ELEMENTS Crystal Beads, 5328 Bicone, 4mm, 24 Pieces, Dark Red Coral



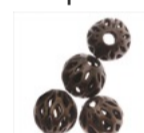
SKU: SWBI-1488
Project uses 1 piece

Antiqued Copper Plated Fluted Round Beads 5.5mm (72 Beads)



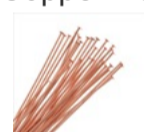
SKU: BMB-5303
Project uses 1 piece

Antiqued Brass Diamond Cut Out 6mm Round Beads (100)



SKU: BMB-5190
Project uses 1 piece

Copper Head Pins 22 Gauge 2 Inches (50 Head Pins)



SKU: FHP-1035
Project uses 2 pieces

Vintaj Natural Brass Jump Rings 4.75mm Open 19 Gauge (25)



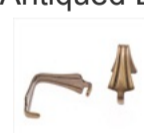
SKU: FJR-5347
Project uses 2 pieces

Vintaj Natural Brass Open Jump Rings 15mm Heavy 15 Gauge (10)



SKU: FJR-5335
Project uses 1 piece

Antiqued Brass Pinch Bail For Stone & Crystal Pendants (10)



SKU: FCO-4023
Project uses 1 piece

Instructions:

1. Cut two pieces of chain eight inches in length and set them aside.
2. Move on to making the pendant. Onto a copper headpin, thread a 4mm dark red coral Swarovski bicone and a fluted antiqued copper bead. Create a wrapped wire loop and trim off excess wire. Onto another copper headpin, thread a 4mm crystal copper Swarovski bicone and a diamond cut out antiqued brass bead. Create a wrapped wire loop and trim off excess wire.
3. Open two small antiqued brass jump rings. To one of the jump rings, add the red lucite maple leaf and the headpin dangle containing the brass bead and the crystal copper bicone. To the other jump ring, add the brown aspen leaf and the headpin dangle containing the copper bead and the dark red coral bicone. Close the two jump rings.
4. Gently pry open the antiqued brass pinch bail, only wide enough to fit over the large Swarovski leaf pendant. Line the two prongs of the pinch bail up with the hole in the Swarovski leaf pendant and carefully squeeze it shut using either your fingers or a pair of nylon jaw pliers.
5. Now open the extra large Vintaj brass jump ring. Thread the following on in this order: one of the eight inch lengths of chain, the jump ring containing the brown lucite aspen leaf and headpin dangle, the Swarovski leaf pendant, the jump ring containing the red lucite maple leaf and headpin dangle, and the other eight inch length of chain. Close the large jump ring again.
6. To one end of the chain, add the jump ring part of the clasp. To the other end of the chain, add the other part of the clasp.

Keywords:leaf, leaves, autumn, fall, btq-nature