

Gold Leaf Necklace

Project N186

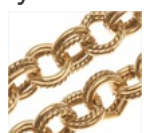
Designer: Andrea Morici

The main feature of this necklace is its clasp, a fetching black on gold collage piece with an antiqued gold fern toggle.



What You'll Need

Antiqued 22K Gold Plated Textured Double Round Link Cable Chain 5mm Bulk By The Foot



SKU: CHA-9851
Project uses 1 foot

Nunn Design Antiqued Gold Plated Pewter Open Jump Rings 8.5mm 16 Gauge (20)



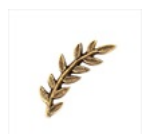
SKU: FJR-2052
Project uses 7 pieces

Nunn Design Gold Plated Flat Tag Circle Toggle Pendant 1.2In



SKU: FCL-7173
Project uses 1 piece

Nunn Design Antiqued Gold Plated Left Leaf Toggle Clasp Bar 25mm



SKU: FCL-7210
Project uses 1 piece

Nunn Design Sealant Protectant 2 oz. - For Patera Findings (1)



SKU: XTL-1032
Project uses 1 piece

Nunn Design Transfer Sheet Graphic Florals For Scrapbook - Fits Patera Patera



SKU: XTL-9516
Project uses 1 piece

22K Gold Plated Head Pins - 21 Gauge - 2 Inches (50)



SKU: FHP-5220
Project uses 18 pieces

Artistic Craft Wire Gold Color Brass Notarnish 22 Gauge 8 Yards



SKU: WCR-2233
Project uses 8 inches

Antiqued 22K Gold Plated 16mm Spiral Ring Connector Link (2)



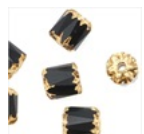
SKU: FCO-3144
Project uses 2 pieces

Antiqued 22K Gold Plated 26mm Spiral Ring Connector Link (2)



SKU: FCO-3132
Project uses 1 piece

Czech Cathedral Glass Beads 6mm Matte Jet Black/Gold Ends (25)



SKU: BCP-6670
Project uses 20 pieces

Instructions:

1. Begin by creating the toggle, which is also the pendant. To do this, take the "graphic florals" transfer sheet and locate the image that we used for this necklace. Place your round Patera toggle on top of the collage image, and trace around the outer and inner circles. Using a sharp blade, such as an X-acto knife, carefully cut out the collage image along the traced lines. Follow the directions on the collage sheet package in order to transfer the image onto the pendant. Set aside to dry.
2. Once the transfer image on the toggle pendant is completely dry, paint on a thin coat of the Nunn Design Sealant. This will protect the image from getting damaged. Set the toggle pendant aside to allow the sealant to dry while you work on the rest of the necklace.
3. Cut two pieces of the 22 gauge wire at four inches long each. Create a wrapped wire loop at one end of each piece of wire. Thread a black and gold cathedral bead onto each piece of wire. Complete both links by creating another wrapped wire loop at the opposite end of each piece of wire, and trimming off excess wire. Set these two links aside.
4. Thread a black and gold cathedral bead onto a headpin and create a wrapped wire loop. Repeat this seventeen more times, creating a total of eighteen danglers. Set these aside.
5. Open an antiqued gold 8.5mm jump ring, and thread it through one end of the chain. To this same jump ring, add three of the black and gold cathedral bead danglers and one of the 16mm antiqued gold swirl connector links. Close this jump ring.
6. Open another jump ring and thread it through the existing 16mm antiqued gold swirl connector link. Onto this jump ring, thread three black and gold cathedral bead danglers and one of the black and gold cathedral bead links. Close this jump ring.
7. Open another jump ring and thread it through the opposite end of the black and gold cathedral bead link. To this same jump ring, add three of the black and gold cathedral bead danglers and one of the 26mm antiqued gold swirl connector links. Close this jump ring.
8. Open another jump ring and thread it through the existing 26mm antiqued gold swirl connector link. Onto this jump ring, thread three black and gold cathedral bead danglers and one of the black and gold cathedral bead links. Close this jump ring.
9. Open another jump ring and thread it through the opposite end of the black and gold cathedral bead link. To this same jump ring, add three of the black and gold cathedral bead danglers and one of the 16mm antiqued gold swirl connector links. Close this jump ring.
10. Open another jump ring and thread it through that last 16mm antiqued gold swirl connector link. To this same jump ring, add three of the black and gold cathedral bead danglers and the collage pendant toggle. Close this jump ring.
11. Open one last jump ring and thread it through the opposite end of the chain. Onto the jump ring, thread the fern-shaped bar part of the toggle clasp. Close the jump ring.