

The Tillie Necklace

Project N1068

Designer: Megan Milliken

Delicate and luxurious, this necklace features SWAROVSKI ELEMENTS crystal bicones woven into beaded beads and strung from an elegant length of sterling silver Soft Flex Extreme beading wire.

What You'll Need

Sterling Silver Spring Ring Round Clasps Open Ring 5mm (10)

SKU: FCL-01050

Project uses 1 piece



Sterling Silver Cord Ends / Crimp Beads With Loop 1.7mm x 2mm - 1mm Hole(10)

SKU: FCR-2319

Project uses 2 pieces



Swarovski Crystal, 5328 Bicone Beads 4mm, 24 Pieces, Rose Alabaster

SKU: SWBI-14065

Project uses 90 pieces



Swarovski Crystal, 5328 Bicone Beads 4mm, 24 Pieces, Crystal

SKU: SWBI-1400

Project uses 120 pieces



Crystal Fireline Braided Beading Thread .006 In. 15 Yards

SKU: XCR-1280

Project uses 21 feet



Soft Flex Extreme Sterling Silver Plated Wire .019 In/30 Ft.

SKU: XCR-5293

Project uses 16 inches



Miyuki Delica Seed Beads 11/0 Transparent Crystal DB141 7.2 Grams

SKU: DB-141

Project uses 60 pieces



Miyuki Delica Seed Beads 11/0 Gilt Lined White Opal DB221 7.2 Grams

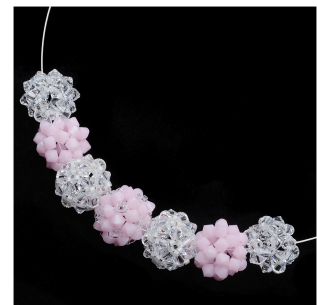
SKU: DB-221

Project uses 120 pieces



Recommended Tools:

[XTL-5700] Fiskars 5 Precision Tip Scissors - Super Sharp, [XTL-3006] Beadsmith English Beading Needles Size 12 (4 Needles), [XTL-5230] Double Notch Crimping Pliers - Works on 2mm And 3mm Crimps, [XTL-0106] BeadSmith Cordless Thread Zap II Thread Burner Tool, [XTL-5511] Beadsmith Jeweller's Micro Pliers Chain Nose Flat Nose, [XTL-5600] Xuron Sharp Flush Cutter Pliers - Wire/Soft Flex



Instructions

1. Before you begin, watch the instructional videos on How to Make a Beaded Bead and How to Make an Ornate Beaded Bead. These videos will teach you how to make the two versions of beaded beads used in this project.
2. Using 4mm crystal bicone beads, create two beaded beads. Repeat with 4mm rose alabaster bicone beads.
3. Using crystal bicone beads and gilt lined white delica beads, create two ornate beaded beads. Then create one ornate beaded bead using rose alabaster bicone beads and transparent crystal delica beads.
4. Cut a 16" length of sterling silver .019" SoftFlex beading wire.
5. Place a sterling silver crimp tube with loop onto one end of the beading wire; crimp.
6. String the beaded beads onto the beading wire by going through holes directly across from each other in the following order: crystal beaded bead, rose beaded bead, crystal ornate beaded bead, rose ornate beaded bead, crystal ornate beaded bead, rose beaded bead, crystal beaded bead.
7. Place another crimp onto the free end of the wire; crimp.
8. Open the loop on a sterling silver spring ring clasp and place it onto one of the crimp tubes with loops; close the loop.
9. Fasten the clasp onto the loop of the other crimp tube to close.