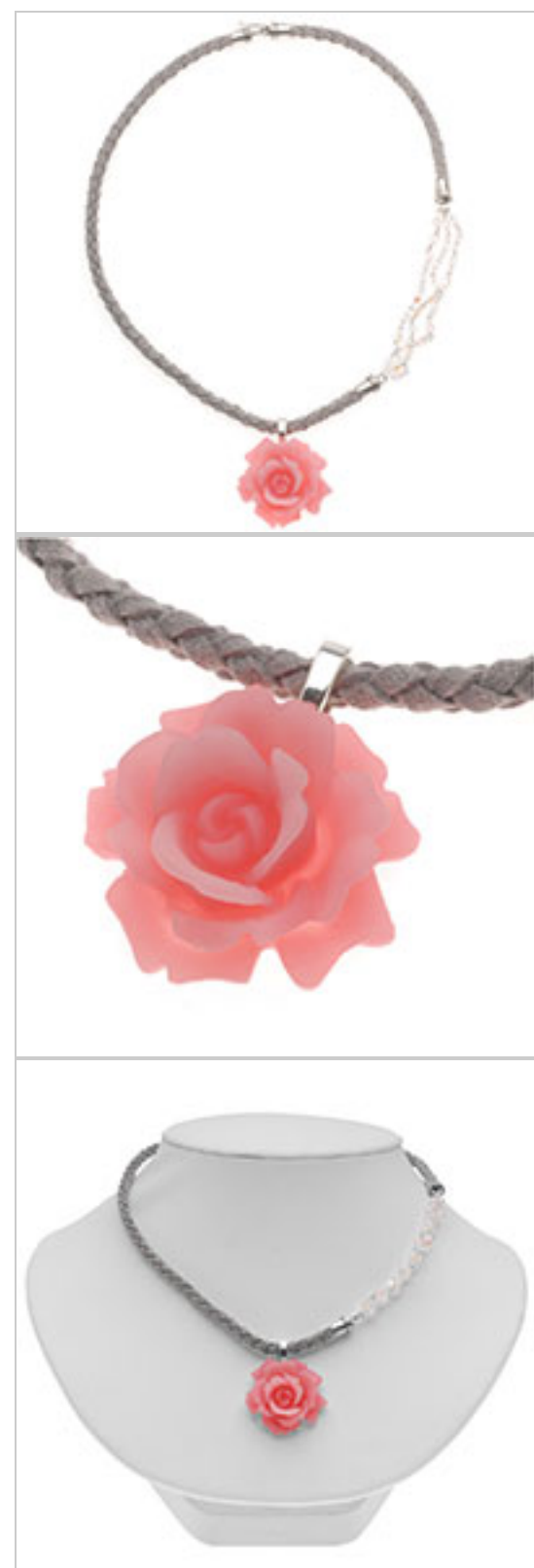


Talia Necklace

Project N1020

Designer: Megan Milliken

This necklace is soft and feminine, but it has a definite strong side, with braided ultra suede cord providing its foundation. Pretty Czech glass beaded chain and a soft pink lucite rose provide a lovely contrast to the faux leather.



What You'll Need

Czech Fire Polish Bead Silver Plated Link Chain 4mm Clear AB Round - 1 Meter



SKU: AXC-99907
Project uses 1 piece

Lucite Cabochons 3-D Large Rose Flower Opaque Pink 34mm (1)



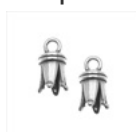
SKU: BCP-4552
Project uses 1 piece

AANRAKU Glue On Pendant Bails Large Silver Plated (10)



SKU: FCO-4222
Project uses 1 piece

Antiqued Silver Plated Bali Pinch Cord Ends For 4mm Cord (1 Pair)



SKU: FCO-8620
Project uses 3 pieces

Antiqued Silver Plated Bali Pinch Cord Ends With Hook For 5mm Cord (1 Pair)



SKU: FCO-8621
Project uses 1 piece

Silver Plated Open Jump Rings 4mm 21 Gauge Thick (100)



SKU: FJR-5140
Project uses 2 pieces

Beadsmith Grey Faux Leather Suede Beading Cord 9Ft (3 Yd) Spool



SKU: XCR-43107
Project uses 1 piece

NYMO Nylon Beading Thread Size D for Delica Beads White 64YD (58 Meters)



SKU: XCR-8901
Project uses 20 inches

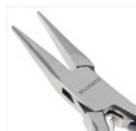
E6000 Industrial Strength Glue Adhesive (0.18 fl oz)



SKU: XTL-1054
Project uses 1 piece

Specialized Tools

Beadsmith Jeweller's Micro Pliers Chain Nose Flat Nose



SKU: XTL-5511

Xuron Sharp Flush Cutter Pliers - Wire/Soft Flex



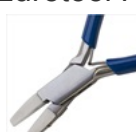
SKU: XTL-5600

Fiskars 5 Precision Tip Scissors - Super Sharp



SKU: XTL-5700

Eurotool Nylon Jaw Pliers Chain Nose- For Scratch-Free Wire Work



SKU: XTL-0074

Instructions:

1. Before you begin, watch the video: How to Make a Four Strand Round Braid. This video will show you how to create the braid used in this project.
2. Remove all of the cord from a 9 foot spool of grey faux suede cord and cut the length in half. With the two lengths together, fold them in half. Tie an overhand knot and inch or so from the folded end, giving you two loops and four strands.
3. Use tape or a safety pin to attach your cord to your workspace. You could also place the end into a clipboard.
4. Braid the lengths of cord into a four strand round braid as demonstrated in the video. Continue until you are a couple of inches from the end, and then tie the very end into an overhand knot.
5. Cut a length of white NYMO beading thread about 10" long. Wrap it around one end of your braid, leaving a 3" tail. Wrap it very tightly several times and then tie it securely in a double knot with the other end of the thread. Trim your ends close to the knot. Measure 11" from this point and repeat the process.
6. Use a pair of flush cutters to cut the braid about 1/8" outside the threads on each side. You should end up with a secured braid that's just over 11" long.
7. Repeat this process with the remaining braid to create a second section that's about 4" long.
8. Apply a dab of E6000 to the glue pad on a large silver plated Aanraku bail and press it firmly onto the back side of an opaque pink large lucite rose cabochon. Allow glue to dry for at least an hour before proceeding.
9. Slide the pendant bail onto the longer braid.
10. Apply a bit of E6000 to the very tip of one end of the longer braid. Insert the braid into an antique silver plated Bali pinch cord end, pushing it all the way in. Make sure that your trimmed threads are hidden behind the cord ends.
11. Use a pair of chain nosed pliers (nylon jaw will prevent marking the cord ends) to gently push the ends of the cord end into the cord. It's not necessary to crimp them in really hard and bend them in dramatically. Just give them a gentle squeeze until it feels like it's snug.
12. Repeat this process on the other end of the long braid with an antique silver plated Bali pinch cord end with hook. Then repeat it twice more with two more plain loop pinch ends on the ends of the shorter braid.
13. Allow the glue to dry for at least an hour before proceeding.
14. Measure a piece of clear AB 4mm Czech fire polish bead silver plated link chain about 3" long. Move down to the end of the link that is at 3". Use a pair of chain nose pliers to open the next loop in the following link and separate your piece of chain. It should measure just over 3". Close the next loop back up. Repeat twice more to give yourself three pieces of chain just over 3" long.
15. Open a 4mm, 21 gauge silver plated jump ring and put it through the end loop on the three pieces of chain. Then bring the jump ring through the loop on one end of the shorter braid and close it up.
16. Repeat with a second jump ring to attach the other ends of the chains to the side of the long braid that has a loop on the cord end.
17. The hook cord end will attach to the loop on the other to close the necklace.
18. Find the middle of your necklace where you'd like the pendant to hang and firmly squeeze the braid together with your fingers, creating a bend. This will give the necklace a more even shape.
19. Allow all glue to dry for at least 24 hours before wearing.

If your necklace doesn't have a nice, even shape after you bend the braid, try hanging it for a while. The weight of the pendant will help to even out the shape, relaxing the braid a bit.

Variations

Choose a different color of ultra suede, different beaded chain, and a rose cabochon to match.

When substituting in items, pay attention to sizes and styles to make sure all your pieces will fit together.



Keywords: cord, braid, leather, suede, grey, gray, pink, lucite, flower, rose