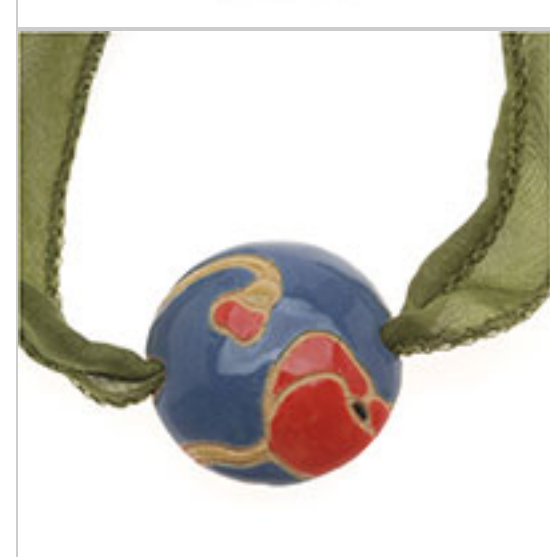


Sonja Necklace

Project N1019 [Skill Level: Beginner]

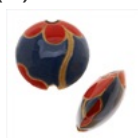
Designer: Megan Milliken

A beautiful ceramic bead from Golem Studio hangs from a silk ribbon and a chunky chain in this necklace. This piece will add a great touch of flair to any everyday look.



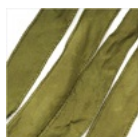
What You'll Need

Golem Studio Glazed Ceramic Lentil Bead Blue With Red Poppy Flower 23mm (2)



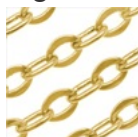
SKU: BWC-495
Project uses unit_type=piece pieces=1

Silk Fabric Flat Silky Ribbon 2cm 'Olive Green' 42 Inch Strand (1)



SKU: XCR-48054
Project uses unit_type=strand pieces=1

Bright 22K Gold Plated Flat Oval Cable Chain 6mm - Bulk By The Foot



SKU: CHA-99988
Project uses unit_type=foot pieces=1

22K Gold-Plated Sterling Silver Lobster Clasps 13mm (1)



SKU: FCL-2543
Project uses unit_type=piece pieces=1

22K Gold Plated Open Jump Rings 4mm 20 Gauge 22k Gold Plated (100)



SKU: FJR-3914
Project uses unit_type=piece pieces=1

22K Gold Plated Open Jump Rings 7mm 18 Gauge (x100)



SKU: FJR-5270
Project uses unit_type=pieces pieces=2

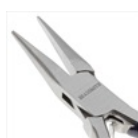
Specialized Tools

Fiskars 5 Precision Tip Scissors - Super Sharp



SKU: XTL-5700

Beadsmith Jeweller's Micro Pliers Chain Nose Flat Nose



SKU: XTL-5511

Xuron Sharp Flush Cutter Pliers - Wire/Soft Flex



SKU: XTL-5600

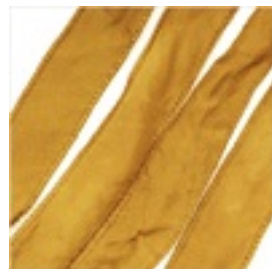
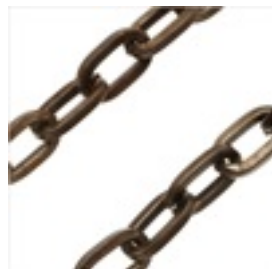
Instructions:

1. Begin by watching the video: How to Attach Ribbon to a Jump Ring.
2. Trim the tapered end off of one side of a length of olive green silk ribbon. Using the method shown in the video, attach this end to a 22k gold plated 7mm, 18 gauge jump ring.
3. Slide a Golem Studio glazed ceramic lentil bead onto your ribbon a few inches from the jump ring.
4. Measure about 10" from the point at which the jump ring is attached and cut the ribbon. Attach the free end to a second 7mm jump ring.
5. Use a pair of flush cutters to cut two 5" lengths of 22k gold plated flat oval cable chain.
6. Use the 7mm jump rings to attach one length of chain to each end of the ribbon.
7. Use a 4mm, 22 gauge 22k gold plated jump ring to attach a 22k gold plated lobster clasp to one end of the chain. You will use the last link on the other end to attach to the clasp.
8. Slide your ceramic bead to the center of the ribbon. The two sides of this bead are slightly different, so you can flip the bead to the side that you prefer.

Variations

Choose from among the selection of Golem Studio lentil beads to create a necklace that matches your personal style.

When substituting in items, pay attention to sizes and styles to make sure all your pieces will fit together.



Keywords: ribbon, ceramic, golem, green, red, gold