

Petalline Hair Combs

Project H8000

Alexandra Smith

This delicate floral hair comb set combines glossy Czech glass 2-hole SuperDuos and Cabochon beads with Miyuki round seed beads. The beaded focal is securely sewn onto a gunmetal frame with Fireline thread.

What You'll Need

CzechMates Glass, 2-Hole Round Cabochon Beads 7mm Diameter, 25 Pieces, Metallic Gold Suede

SKU: BCP-20670

Project uses 6 beads



Czech Glass SuperDuo Duets, 2-Hole Beads 2x5mm, 8 Grams, Black & White Red Luster

SKU: BCT-455

Project uses 72 beads



Miyuki Round Seed Beads, 11/0 Size, 8.5 Gram Tube, 4217 Duracoat Galvanized Seafoam (Blue)

SKU: DMRR-4217

Project uses 1 tube



Gun Metal- Shiny Grey/Black Hair Combs - Fun Craft Beading Project 1.75 Inches (6)

SKU: FCO-9004

Project uses 2 pieces



FireLine Braided Beading Thread, 4lb Test and 0.005 Thick, 15 Yards, Smoke Gray

SKU: XCR-1285

Project uses 12 feet



G S Hypo Cement Precise Applicator Essential!

SKU: XTL-1001

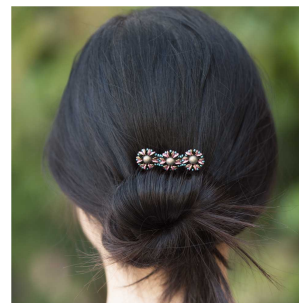
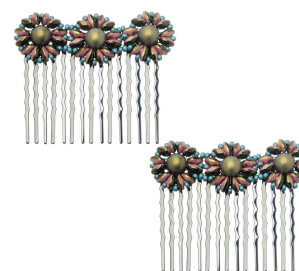
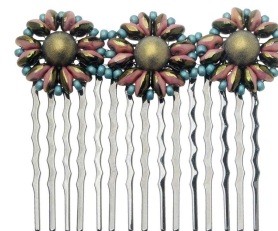
Project uses 1 tube



Recommended Tools:

[XTL-3006] Beadsmith English Beading Needles Size 12 (4 Needles), [XTL-0373] Tulip

Premium Scissors, Gold Handle 5 Inch, 1 Pair



Instructions

By following the instructions below, you will make one hair comb. Repeat all instructions to make the second hair comb.

1. To learn how to bead weave this flower design, please watch the video: How to Attach a Bead Woven Focal to a CenterLine Cuff. Follow along with the video to weave your beaded focal of 3 floral units.
2. To sew your focal onto a hair comb, begin by cutting 2 feet of Fireline thread and tie a double overhand knot around the end loop on one side of your hair comb. Add a dab of glue to your knot, clip the tail and thread your needle.
3. Next, lay your beaded focal over the top of the hair comb and line up the first and third cabochon beads with the ends of the comb so that your focal is

centered on the comb.

4. Begin sewing on your focal by stringing your needle through the hole of one of your outermost cabochons and then back through the third loop of the hair comb. Continue sewing across the top of your comb, using your cabochon beads as primary anchor points and sewing through the holes of the SuperDuos as your thread path indicates.

5. Once you have completed sewing on your beaded focal, tie off and weave in your thread. Trim the excess thread. Enjoy your hair comb!