

Tahitian Sunset Earrings

Project E900

Julie Bean

These elegant gold plated earrings feature beautiful Swarovski crystal faux pearls in the rich blue/green color of Iridescent Tahitian Look. The pearls are suspended in the center of a tear drop design pinch bail.

What You'll Need

Swarovski Crystal, 5810 Round Faux Pearl Beads 10mm, 10 Pieces, Iridescent Tahitian Look

SKU: SWP-1035

Project uses 2 pieces



Pinch Bail for Pendants, Tear Drop Design, 34mm, 2 Pieces, Gold Plated

SKU: FCO-9378

Project uses 2 pieces



22K Gold Plated Long Elegant Earring Hooks 25mm (50)

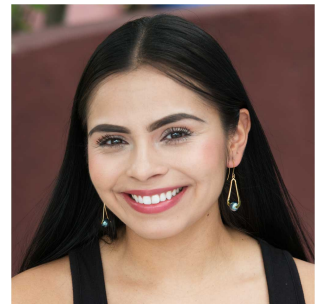
SKU: FEA-3030

Project uses 1 pair



Recommended Tools:

[XTL-5450] Xuron Jeweler's Super Fine Pliers Chain Nose Flat Nose



Instructions

By following the instructions below, you will make one earring. Repeat all instructions to make the second earring.

1. Start by watching the video: How to Use Pinch Bail and Pendant Earring Findings. In the video you will learn how to suspend your Swarovski pearl between the two sides of the pinch bail. Do this step now.
2. Open the loop at the base of the earring hook (the same way you would open a jump ring) and connect it to the loop on top of the pinch bail. Close the loop back up.
3. Enjoy!