

Champagne & Ice Earrings

Project E897

Julie Bean

Elegant with an edge is the best way to describe these sparkly earrings. The feature Gita Jewelry settings and Swarovski Crystal chatons and pear pendants.

What You'll Need

Gita Jewelry Stone Setting for Swarovski Crystal, Leverback Earrings with Bottom Loop SS39 Chaton, 1 Pair, Gold Plated

SKU: FEA-9693

Project uses 1 pair



22K Gold Plated 6mm 19 Gauge Open Jump Rings (100)

SKU: FJR-5260

Project uses 2 pieces



Swarovski Crystal, 1088 Xirius Round Stone Chatons ss39, 6 Pieces, Crystal Gold Patina F

SKU: SWCH-639541

Project uses 2 pieces



Swarovski Crystal, 6106 Pear Pendant 22mm, 1 Piece, Crystal Gold Patina

SKU: SWCR-6066

Project uses 2 pieces

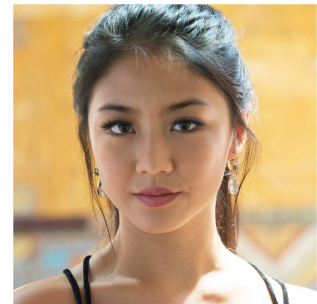


Recommended Tools:

[STICK-PKIT-00] Natural Wood Craft Sticks, Flat with Rounded Edge 4.5 Inches, 10 Sticks,

[XTL-5450] Xuron Jeweler's Super Fine Pliers Chain Nose Flat Nose, [XTL-0020] Baby

Wubbers Quality Fine Chain Nose Jeweller's Pliers



Instructions

By following the instructions below, you will make one earring. Repeat all instructions to make the second earring.

1. Please watch the video: How to Make the Champagne & Ice Earrings with Gita Settings for Swarovski Crystals.
2. In the course of the video you will see how to make these earrings from start to finish. Please follow the directions in the video to make this pair of earrings.
3. Enjoy!