

Cabo Stroll Earrings

Project E896

Julie Bean

Pretty resort colors of azure blue and light coral mix wonderfully with the gold of the earring setting. These earrings are delightfully easy to make and a joy to wear. They feature Swarovski Crystals and Gita Jewelry settings.

What You'll Need

Gita Jewelry Stone Setting for Swarovski Crystal, Leverback Earrings for SS39 Chaton & Tilted 12mm Cushion, Gold Plated

SKU: FEA-9632

Project uses 1 pair



Swarovski Crystal, 4470 Cushion Fancy Stone 12mm, 1 Piece, Crystal Light Coral

SKU: SWCR-4380

Project uses 2 pieces



Swarovski Crystal, 1088 Xirius Round Stone Chatons ss39, 6 Pieces, Crystal Azure Blue

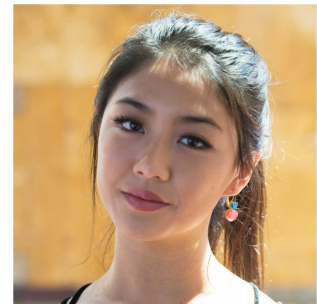
SKU: SWCH-639568

Project uses 2 pieces



Recommended Tools:

[STICK-PKIT-00] Natural Wood Craft Sticks, Flat with Rounded Edge 4.5 Inches, 10 Sticks



Instructions

By following the instructions below, you will make one earring. Repeat all instructions to make the second earring.

1. Please begin this project by watching the video: How to Make Earrings with Gita Settings for Swarovski Crystals. The video will show you how to set your crystals into the Gita Jewelry settings using a popsicle stick.
2. Based upon what you learned in the video, set your stone into the setting. In this particular earring, you will be setting 2 stones per earring.
3. Enjoy wearing these!