

## Princess for a Day Earrings

### Project E895

Julie Bean

These dazzling earrings sparkle beautifully and feature light rose crystal chatons by Swarovski Crystal which have been set down into Gita Jewelry earring settings with lovely crystal surrounds.

### What You'll Need

Gita Jewelry Stone Setting for Swarovski Crystal, Crown Leverback Earrings SS39 Chaton with 12 Crystals, Rhodium Plated

SKU: FEA-9665

Project uses 1 pair



Swarovski Crystal, 1088 Xirius Round Stone Chatons ss39, 6 Pieces, Lt Rose

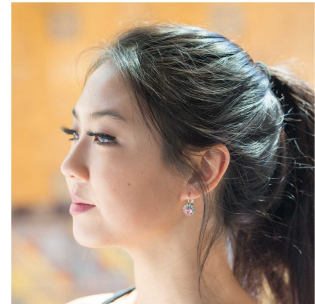
SKU: SWCH-63980

Project uses 2 pieces



### Recommended Tools:

[STICK-PKIT-00] Natural Wood Craft Sticks, Flat with Rounded Edge 4.5 Inches, 10 Sticks



## Instructions

By following the instructions below, you will make one earring. Repeat all instructions to make the second earring.

1. Please begin this project by watching the video: How to Make Earrings with Gita Settings for Swarovski Crystals. The video will show you how to set your crystals into the Gita Jewelry settings using a popsicle stick. Although the prong settings for this particular pair of earrings are a little different than the one shown in the video, it will be the same basic technique.
2. Using your fingers, pop the stone into the setting. Once it is in the setting, use your popsicle stick to curve the prongs gently over the top of the stone. Use the same principle as shown in the video where you fold over a prong and then do one on the other side of the setting and keep working on diagonal prongs so as to keep the stone in place and prevent slipping.
3. Enjoy!