

Country Blues Earrings

Project E894

Julie Bean

These lovely little earrings feature a crystal summer blue Swarovski Crystal cushion fancy stone set down into a Gita Jewelry setting with a rope detailing surround. This particular Gita setting is a glue-in setting, making this project very quick and easy.

What You'll Need

Gita Jewelry Stone Setting for Swarovski Crystal, Cast Metal Leverback Earrings 12mm Cushion, Antiqued Silver Plated

SKU: FEA-9681

Project uses 1 pair



Swarovski Crystal, 4470 Cushion Fancy Stone 12mm, 1 Piece, Crystal Summer Blue

SKU: SWCR-4391

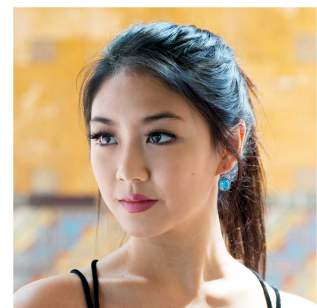
Project uses 2 pieces



E6000 Industrial Strength Glue Adhesive (0.18 fl oz)

SKU: XTL-1054

Project uses 1 piece



Instructions

Please note that you will also need a scrap piece of wire or a toothpick for this project. By following the instructions below, you will make one earring. Repeat all instructions to make the second earring.

1. Place a small dab of glue into the interior base of the Gita Jewelry setting. Place the stone into the glue and press into place. Let dry for 24 hours before wearing.
2. All done!