

Swarovski Crystal Rhinestone Drop Earrings in Gold

Project E866

Julie Bean

Elegant, sparkling, and timeless, these drop earrings are a wardrobe must. They feature a long dangle of Swarovski crystal rhinestone cup chain with a Swarovski crystal channel charm attached at the end. This pair is created in lovely gold plate and crystal AB.

What You'll Need

SWAROVSKI ELEMENTS Gold Plated Rhinestone Cup Chain 24PP Crystal AB - BY THE FT

SKU: CHA-2022

Project uses 1 foot



Gold Plated Foldover 24PP Cup Chain Crimp On Ends For Cup Chain (20 Pieces)

SKU: FCR-8010

Project uses 4 pieces



Swarovski Crystal, Gold Plated Channel Charm, 7mm, 8 Pieces, Crystal AB

SKU: SWFA-1021

Project uses 2 pieces



22K Gold Plated Long Elegant Earring Hooks 25mm (50)

SKU: FEA-3030

Project uses 1 pair



22K Gold Plated Open Jump Rings 4mm 21 Gauge (x100)

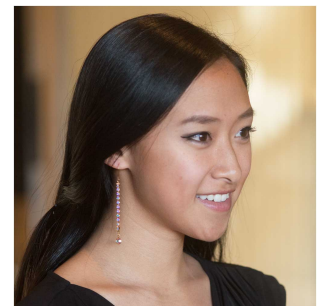
SKU: FJR-5240

Project uses 2 pieces



Recommended Tools:

[XTL-0023] Baby Wubbers Quality Fine Bent Chain Nose Jeweller's Pliers, [XTL-0020] Baby Wubbers Quality Fine Chain Nose Jeweller's Pliers, [XTL-5600] Xuron Sharp Flush Cutter Pliers - Wire/Soft Flex



Instructions

By following the instructions below, you will make one earring. Repeat all instructions to make the second earring.

1. Cut a length of cup chain that is 10 rhinestone links long. Onto each end of the cup chain, attach a cup chain crimp on end.
2. Open a jump ring and link it to the loop on one end as well as the Swarovski crystal channel charm. Close the jump ring.
3. Open the loop at the base of the earring hook, the same way you would open a jump ring, and link it to the other cup chain end. Close the loop.
4. If you want to see how to make this bracelet from start to finish, watch the video: [How to use Rhinestone Cup Chain in Jewelry Designs.](#)

5. Enjoy!