

Swarovski Crystal Rhinestone Drop Earrings

Project E856

Julie Bean

Elegant, sparkling, and timeless, these drop earrings are a wardrobe must. They feature a long dangle of Swarovski crystal rhinestone cup chain with a Swarovski crystal channel charm attached at the end.

What You'll Need

SWAROVSKI ELEMENTS Rhodium Plated Rhinestone Cup Chain 24PP Crystal - BY THE FT.

SKU: CHA-2018

Project uses 4 inches



Silver Plated Long Elegant Earring Hooks (50)

SKU: FEA-3025

Project uses 1 pair



Rhodium Plated Foldover 24PP Cup Chain Crimp On Ends For Cup Chain (20 Pieces)

SKU: FCR-8008

Project uses 4 pieces



Silver Plated Open Jump Rings 4mm 21 Gauge Thick (100)

SKU: FJR-5140

Project uses 2 pieces



SWAROVSKI ELEMENTS Rhodium Plated Channel Crystal Charm Crystal 10mm (8)

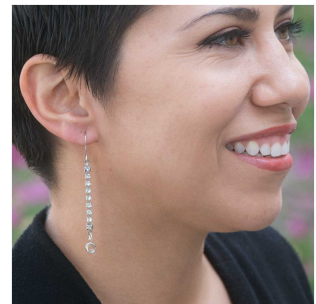
SKU: SWFA-1000

Project uses 2 pieces



Recommended Tools:

[XTL-0023] Baby Wubbers Quality Fine Bent Chain Nose Jeweller's Pliers, [XTL-0020] Baby Wubbers Quality Fine Chain Nose Jeweller's Pliers, [XTL-5600] Xuron Sharp Flush Cutter Pliers - Wire/Soft Flex



Instructions

By following the instructions below, you will make one earring. Repeat all instructions to make the second earring.

1. Cut a length of cup chain that is 9 rhinestone links long. Onto each end of the cup chain, attach a cup chain crimp on end.
2. Open a jump ring and link it to the loop on one end as well as the Swarovski crystal channel charm. Close the jump ring.
3. Open the loop at the base of the earring hook, the same way you would open a jump ring, and link it to the other cup chain end. Close the loop.
4. If you want to see how to make this bracelet from start to finish, watch the video: [How to use Rhinestone Cup Chain in Jewelry Designs](#).
5. Enjoy!