

Mosaic Earrings

Project E728 [Skill Level: Intermediate]

Designer: Julie Bean

These pretty earrings feature striking mosaic patterned Golem Studios ceramic lentil beads. Accenting the lines of the tiled mosaic pattern are sharp petal bead caps that have been formed around the focal beads, giving the overall design a cohesive feel.



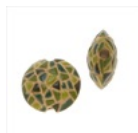
What You'll Need

Antiqued Brass Beaded 7-Petal Flower Bead Caps - 9mm (24)



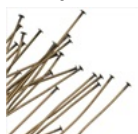
SKU: BMB-6840
Project uses 4 pieces

Golem Studio Glazed Ceramic Lentil Bead Lime Green And Dark Green Mosaic Pattern 18mm (2)



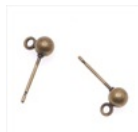
SKU: BWC-596
Project uses 2 pieces

Antiqued Brass Head Pins - 21 Gauge 3 Inches (25)



SKU: FHP-06303
Project uses 2 pieces

Antiqued Brass Stud Earrings Ball Post & Ring 4mm (20)



SKU: FEA-1070
Project uses 1 pair

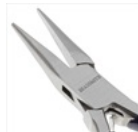
Antiqued Brass Earring Backs (Earnuts) Medium (50)



SKU: FEA-1021
Project uses 2 pieces

Specialized Tools

Beadsmith Jeweller's Micro Pliers Chain Nose Flat Nose



SKU: XTL-5511

Xuron Sharp Flush Cutter Pliers - Wire/Soft Flex



SKU: XTL-5600

Wire Looping Pliers - Concave And Round Nose



SKU: XTL-5032

Instructions:

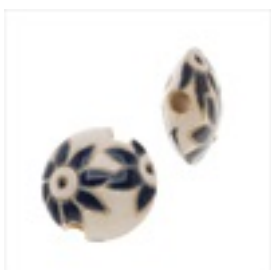
Remember to double these directions to make your matched pair of earrings.

1. Start this project by using your fingers to gently fold one of your bead caps in half. Do not fold it all the way, but squish it enough so that it will cup the base of your Golem Studios bead. If the bead cap is too strong for your fingers to bend, use your chain nose pliers to ease the sides together. Repeat with a second bead cap.
2. Onto a head pin place 1 of your squished bead caps from above, a Golem Studios lentil bead, and the second squished bead cap.
3. After the last bead cap, start to create a wrapped wire loop. After you have created the loop but before you make your wraps, insert into the loop the hoop at the base of your antique brass stud earring post with ball. Finish making your wraps. Cut off excess wire with flush cutters.
4. All done!

Variations

Choose from a wide variety of Golem Studios lentil beads for this project.

When substituting in items, pay attention to sizes and styles to make sure all your pieces will fit together.



Keywords: Golem Studios